



BASKETBALL

7 NCAA TOURNAMENT APPEARANCES | 1997 | 1998 | 1999 | 2000 | 2003 | 2004 | 2005

Daniel Berk

Assistant Director of Athletics Communications

1 National Championship Drive, McKale 106, Tucson, AZ

O: (520) 621-1814 | C: (314) 363-5842

dberk@arizona.edu | www.ArizonaWildcats.com

Twitter: @ArizonaWBBall | Facebook.com/ArizonaWomensBasketball

SCHEDULE/RESULTS

NOVEMBER

10	E. NEW MEXICO (EX)	W, 71-37
14	at Toledo	W, 62-59
18	HOWARD	W, 65-28
21	at San Diego	L, 59-54
23	KANSAS	W, 67-52
27	North Texas	W, 51-44

DECEMBER

2	NEW MEXICO ST.	W, 68-64
5	PACIFIC	W, 69-56
10	LOUISIANA TECH	W, 77-67
19	SMU %	L, 58-46
20	Florida Gulf Coast %	L, 57-55
21	Gardner-Webb %	W, 79-60
29	GEORGE MASON	W, 68-60 (OT)

JANUARY

2	11 STANFORD**	3 p.m.
4	CALIFORNIA**	8 p.m.
8	at Washington State*	8 p.m.
10	at Washington**	3 p.m.
15	UTAH*	7 p.m.
17	COLORADO**	2 p.m.
22	at 15 Arizona State**	7 p.m.
24	15 ARIZONA STATE**	5 p.m.
29	at 10 Oregon State**	7 p.m.
31	at Oregon**	1 p.m.

FEBRUARY

6	USC**	8 p.m.
8	UCLA*	1 p.m.
12	at 11 Stanford**	8:30 p.m.
14	at California**	1 p.m.
19	WASHINGTON*	7 p.m.
21	WASHINGTON STATE*	1 p.m.
26	at UCLA**	9 p.m.
28	at USC*	3 p.m.

MARCH

3-6 Pac-12 Tournament TBA

(EX)- Exhibition contest

% - Puerto Rico Classic

* - Pac-12 Conference game

#- Game to be televised on Pac-12 Networks

All times are local Arizona time and subject to change

Home games, in **BOLD**

GAME AT A GLANCE

DATE: January 2, 2016

VENUE: McKale Center

CAPACITY: 14,655

SERIES: Stanford leads 60-13

LAST MEETING: Arizona, 60, Stanford 57 (2/8/15)

RADIO: Arizona IMG Sports Network/ KTUC AM 1400 (Derrick Palmer)

TV: Pac-12 Networks

LIVE STATS: arizonalivestats.com

TWITTER: @ArizonaWBBall

FACEBOOK: [Facebook.com/ArizonaWomensBasketball](https://www.facebook.com/ArizonaWomensBasketball)

INSTAGRAM: @arizonawbball



ARIZONA WILDCATS

Record: 9-3

Ranking (AP/Coaches): -/-

Coach: Niya Butts

Alma Mater: Tennessee '00

Career Record/Yrs: 98-131/8th

School Record/Yrs: Same

'14-15 Record: 10-20 (3-15 Pac-12)

Last Game: Arizona, George Mason 60, OT



STANFORD CARDINAL

Record: 10-2

Ranking (AP/Coaches): 11/11

Coach: Tara VanDerveer

Alma Mater: Indiana, '75

Career Record: 963-219/36th

School Record/Yrs: 811-168/29th

'14-15 Record: 26-10 (13-5 Pac-12)

Last Game: Stanford 73, Chattanooga 30

QUICK NOTES

- Arizona will open Pac-12 play Saturday with a late-afternoon matchup with No. 11 Stanford. The Wildcats closed non-conference play Tuesday with a 68-60 overtime victory over George Mason to finish 9-3 heading into league play. The Cats are 6-0 on their home court this season, having beaten Howard, Kansas, New Mexico State, Pacific, Louisiana Tech and George Mason.
- The matchup with the Cardinal will be the 74th all-time meeting between the two schools. Stanford owns a 60-13 advantage in the series, but lost to the Wildcats in the most recent game, 60-57. Candice Warthen, then a senior, had 19 points and nine rebounds to lead Arizona in the win over Stanford. Breanna Workman, currently a junior, had 17 points in 33 minutes in the win.
- The six-game home winning streak to open the season is the longest since 2011-2012 when the Cats also started 6-0 at McKale Center. The Wildcats have a seven-game home winning streak dating back to last season which is the longest since a nine-game winning streak in 2010-2011.
- Arizona debuted a new starting lineup last game against George Mason with LaBrittney Jones and Destiny Graham each starting for the first time this season. Jones had a season-high 16 points and Graham had a career best 14 points.
- Arizona is second in the Pac-12 in 3-point field goal percentage at .405.

LAST GAME'S STARTING 5

No.	Name	Position	Ht.	Class-Exp.	Points	Rebounds	Assists	Steals	Minutes
33	JaLea Bennett (12)	G	6-0	So.-1L	7.3	2.1	0.8	0.8	20.0
3	Taryn Griffey (11)	G	5-7	RFr.-HS	10.9	2.9	1.8	0.9	21.7
15	Keyahndra Cannon (12)	G	5-9	Sr.-3L	4.2	2.5	1.3	1.2	23.0
21	Destiny Graham (1)	F	6-3	Fr.-HS	3.2	3.3	1.0	0.7	14.4
24	LaBrittney Jones (1)	F	6-1	Jr.-2L	11.0	4.8	1.0	1.3	22.5

() starts this season

2 MORE TO WATCH



LAUREN EVANS, GUARD, PHOENIX

Evans is coming off a career-high 10 points last time out against George mason. The junior transfer from Virginia Tech played a career best 27 minutes in the win and also grabbed six rebounds. Evans has played in all 12 games, coming off the bench in each game. She's averaging 21.1 minutes per game and 4.3 points per contest to go with 4.0 rebounds a game. Evans is also the team leader in steals with 17.



MALENA WASHINGTON, GUARD, BEAUMONT, TEXAS

Washington continues to be a force for the Wildcats off the bench as the season progresses. Washington leads the team with 11.3 points per game and is also tops in assists with 35. She's 18 of 50 from the 3-point line and is shooting .403 from the field overall. Washington has also been the team's top performer at the free throw line, hitting 22 of 27 from the charity stripe. Washington had a career high 21 points against Pacific in December.

ROSTER INFORMATION

NUMERICAL

No.	Name	Pos.	Ht.	Cl.-Exp.	Hometown/High School (Last School)
0	Breanna Workman	F	6-1	Jr.-2L	Las Vegas, Nev. (Centennial HS)
3	Taryn Griffey	G	5-7	R-Fr.-HS	Seattle, Wash. (Dr. Phillips HS)
10	Lauren Evans	G	5-11	R-Jr.-TR	Phoenix, Ariz./Hamilton HS (Virginia Tech)
13	Eugenie Simonet-Keller	C	6-8	Fr. - HS	La Biot, France (IMG Academy)
14	Malena Washington	G	5-6	Jr.-1L	Beaumont, Texas/ Central HS (Tyler JC)
15	Keyahndra Cannon	G	5-9	Sr.-3L	San Diego, Calif. (Mission Bay HS)
20	Farrin Bell	G	6-0	R-Jr.-1L	Richardson, Texas/Richardson HS (SMU)
21	Destiny Graham	F	6-3	Fr. HS	San Francisco, Calif. (Eastside College Prep)
23	Michal Miller	G	5-7	Fr.- HS	Michigan City, Ind. (Michigan City HS)
24	LaBrittney Jones	F	6-1	Jr.-2L	Cedar Hill, Texas (Cedar Hill HS)
31	Dejza James	F	6-1	Jr.-2L	Elk Grove, Calif. (Pleasant Grove HS)
33	JaLea Bennett	G	6-0	So.-1L	Grand Prairie, Texas (Mansfield Timberview HS)
42	A'Shanti Coleman	F	6-2	Fr.-HS	San Francisco, Calif. (Sacred Heart Cathedral Prep)

COACHING STAFF

Head Coach: Niya Butts (Tennessee, '00), 8th Year

Assistant Coach: E.C. Hill (Northern Illinois, '95), 5th Year

Asst. Coach/ Recruiting Coordinator: Calamity McEntire (Tennessee, '03), 4th Year

Assistant Coach: Sean LeBeauf (Montevallo-Ala., '94), 3rd Year

SUPPORT STAFF

Director of Operations: Lisa Salgado

Assistant Director of Operations: Alli Gloyd

Video Coordinator: Daniel Boice

Athletic Trainer: Doug Contaoi

ALPHABETICAL ROSTER

No.	Name	Pos
20	Farrin Bell	G
33	JaLea Bennett	G
15	Keyahndra Cannon	G
42	A'Shanti Coleman	F
10	Lauren Evans	G
21	Destiny Graham	F
3	Taryn Griffey	G
31	Dejza James	F
24	LaBrittney Jones	F
23	Michal Miller	G
13	Eugenie Simonet-Keller	C
14	Malena Washington	G
0	Breanna Workman	F

PRONUNCIATIONS

Niya Butts	NIGH-ah
Sean LeBeauf	Leh-BUFF
Farrin Bell	FARE-in
JaLea Bennett	Juh-LEE-uh
Keyahndra Cannon	Key-ON-druh
Cherice Harris	Sher-EES
Dejza James	DAY-juh
Malena Washington	Muh-LEE-nuh
Breanna Workman	Bree-ANN-uh

ROSTER BREAKDOWN

By Height:

Eugenie Simonet-Keller	6-8
Destiny Graham	6-3
A'Shanti Coleman	6-2
LaBrittney Jones	6-1
Breanna Workman	6-1
Dejza James	6-1
Farrin Bell	6-0
JaLea Bennett	6-0
Lauren Evans	5-11
Keyahndra Cannon	5-9
Taryn Griffey	5-7
Michal Miller	5-7
Malena Washington	5-6

Returners (2014-15 stats):

LaBrittney Jones	9.0 ppg/5.7 rpg
Malena Washington	6.9 ppg/2.1 rpg
Keyahndra Cannon	5.5 ppg/ 2.3 rpg
JaLea Bennett	4.5 ppg/2.3 rpg
Breanna Workman	4.4 ppg/3.7 rpg
Dejza James	3.6 ppg/2.9 rpg
Farrin Bell	1.0 ppg/1.0 apg
Lauren Evans	DNP - TR
Taryn Griffey	DNP-injury

Newcomers:

Michal Miller	Fr./G/5-7
Eugenie Simonet-Keller	Fr./C/6-8
Destiny Graham	Fr./F/6-3
A'Shanti Coleman	Fr./F/6-2

By Position:

Guards	7
Forwards	5
Centers	1

By Class:

Freshmen	5
Sophomores	2
Juniors	6
Seniors	1

By State/Country:

California	4
Texas	4
Arizona	1
Indiana	1
Nevada	1
Washington	1
France	1

2015-16 ARIZONA WOMEN'S BASKETBALL RADIO/TV ROSTER



#0 BREANNA WORKMAN
F • 6-1 • Jr.-2L
Las Vegas, Nev.



#3 TARYN GRIFFEY
G • 5-7 • R-Fr.-HS
Seattle, Wash.



#10 LAUREN EVANS
G • 5-11 • R-Jr.-TR
Phoenix, Ariz.



#13 EUGENIE SIMONET-KELLER
C • 6-8 • Fr.-HS
La Biot, France



#14 MALENA WASHINGTON
G • 5-6 • Jr.-1L
Beaumont, Texas



#15 KEYAHNDRA CANNON
G • 5-9 • Sr.-3L
San Diego, Calif.



#20 FARRIN BELL
G • 6-0 • RSo.-TR
Richardson, Texas



#21 DESTINY GRAHAM
F • 6-3 • Fr.-HS
East Palo Alto, Calif.



#23 MICHAL MILLER
F • 5-7 • Fr.-HS
Michigan City, Ind.



#24 LABRITTNEY JONES
F • 6-1 • Jr.-2L
Cedar Hill, Texas



#31 DEJA JAMES
F • 6-1 • Jr.-2L
Elk Grove, Calif.



#33 JALEA BENNETT
G • 6-0 • So.-1L
Grand Praire, Texas



#42 A'SHANTI COLEMAN
F • 6-2 • Fr.-HS
San Francisco, Calif.



NIYA BUTTS
Head Coach
8th Season at Arizona



E.C. HILL
Assistant Coach
5th Season at Arizona



CALAMITY McENTIRE
Assistant Coach
4th Season at Arizona



SEAN LeBEAUF
Assistant Coach
3rd Season at Arizona



LISA SALGADO
Director of Operations
4th Season at Arizona

MEDIA POLICIES AND SERVICES

ARIZONA ATHLETICS COMMUNICATIONS

Office Phone (520) 621-4163
Office Fax (520) 621-2681
Press Row Phone (520) 621-5291
Ticket Office (520)-621-CATS
Web site www.ArizonaWildcats.com
Mailing Address McKale Center, Rm 106
1 National Championship Dr.,
Tucson, AZ 85721

Daniel Berk, Assistant Director/WBB Contact
Office Phone (520) 621-1814
Mobile Phone (314) 363-5842
E-mail dberk@arizona.edu

ATHLETICS COMMUNICATIONS OFFICE

- The University of Arizona Athletics Communications Office is located in Room 106 on the ground floor of the McKale Center
- The McKale Center is located at 1 National Championship Drive.

CREDENTIALS

- Requests for press, radio, television and photographer credentials should be emailed at least 48 hours in advance to Daniel Berk in the Athletics Media Relations Office at dberk@arizona.edu. Passes are available for working media only and are required for all games. Credentials may be picked up in the Athletic Communications Office on the day of the game or at the McKale Center Ticket Office beginning 90 minutes prior to tip-off. Media Credentials for away games will be administered through the home SID.

PRACTICES

- All local and visiting media are welcome to watch Arizona women's basketball practices, but must make prior arrangements through the Athletic Communications Office in order to attend. TV crews and photographers are welcome to shoot footage of practices, provided they stay outside the boundaries of the court. Please contact Daniel Berk about covering practices.
- All game day and road practices are closed.

INTERVIEWS

- All interviews with UA coaches, student-athletes and administrators MUST be coordinated through the Arizona Athletics Communications office.
- Arrangements to speak with a member of the women's basketball program should be made with Daniel Berk at least one day prior to the desired interview date. Players and coaches are generally available following practice.
- The locker rooms, training room and weight room inside McKale Center and Richard Jefferson Gymnasium are off-limits to reporters.
- On game days, no UA players will be available until the postgame media session.
- Postgame interviews after home games will be conducted in the interview room which is located in room 105 next to the Athletic Communications Office inside McKale Center. For post game interviews following road games contact Daniel Berk.

ACCESS TO WILDCATS INFORMATION

- **ArizonaWildcats.com** - The official website of University of Arizona athletics includes rosters, schedules, statistics, player profiles, press releases, game notes and more. The site is updated daily and also includes links to listen to UA athletics events live over the Internet.
- **E-Mail List** - Press releases, notes and statistics are e-mailed to a large contingent of media. To be added to the list please contact Daniel Berk. Notes packets will be available at least 24 hours prior to each game, and in many instances much earlier.

PAC-12.COM

- The league's official web site contains information on all 12 schools, including updated conference statistics, schedules and standings.

Recapping Non-Conference Play

Arizona went 9-3 in non-conference play this season, which is its best mark since going 11-1 in 2011-12. It marks the third time in coach Niya Butts' eight seasons that the Wildcats won at least nine games in pre-conference play. The Wildcats enter their Pac-12 opener with Stanford with junior guard Malena Washington leading the team in scoring at 11.3 points per game. LaBrittney Jones, who missed the first eight games with a foot injury, is averaging 11.0 points a contest in the four games she has played in. Redshirt freshman guard Taryn Griffey has soared in her first season and is averaging 10.9 points per game and is shooting 49 percent from 3-point distance. Arizona went 6-0 at McKale Center during non-conference play and outscored opponents by an average margin of 14.5 points per game. The most lopsided contest game on Nov. 18, when the Wildcats beat Howard 65-28, setting a new school record for fewest points allowed in a game. The closest contest was a 68-64 win over New Mexico State on Dec. 2.

LB's Block Party

It hasn't taken long for LaBrittney Jones to show off her ability on the defensive end. The junior from Cedar Hill, Texas has nine blocks in four games this season, giving her 85 for her career. With three more, she will pass Anne McFadden for sixth all-time in school history. Jones will also likely pass Dana Patterson soon, who is fifth all-time in school history with 91. In her career, Jones is averaging more than a block per game. She has 85 blocks in just 64 career games. Jones has also scored in double figures twice in her four games this season and has gotten to the free throw line 25 times in four games.

Arizona Career Blocked Shots Leaders

1. Shawntinice Polk, 222
2. Ify Ibekwe, 166
3. Elizabeth Pickney, 147
4. Marte Alexander, 121
5. Dana Patterson, 91
6. Anne McFadden, 87
7. **LaBrittney Jones, 85**

Some "Key" Steals

Senior Keyahndra Cannon had five steals in the first nine games of the season, but has turned it on recently. The San Diego native has nine steals over the last three games, picking up three steals in each game. Cannon has four three-steal games to her credit this season, with the other one coming on Nov. 18 against Howard. Cannon has 62 steals in her career and is on pace to shatter her season best of 21 steals set last year as a junior.

Depth on Depth on Depth

The Wildcats enter Saturday's Pac-12 opener with Stanford having seven players average at least 20 minutes per game and nine players averaging at least 15 minutes a contest. The Wildcats are the only team in the league with at least seven players averaging 20 minutes a game and nine at 15

or more. UCLA has seven at 20 minutes or more and seven at 15 or more. Arizona State and Washington State both have nine players averaging 15 minutes a contest, but the Sun Devils have just six at 20 or more and Washington State has four.

Arizona Leaders by Minutes Per Game

1. Breanna Workman, 26.0
2. Keyahndra Cannon, 23.0
3. Malena Washington, 22.9
4. LaBrittney Jones, 22.5
5. Taryn Griffey, 21.7
6. Lauren Evans, 21.1
7. JaLea Bennett, 20.0
8. Dejza James, 17.8
9. A'Shanti Coleman, 16.9

Pac-12 Depth Distributed

School	Players averaging 20+	Players averaging 15+
Arizona	7	9
UCLA	7	7
Arizona State	6	9
Colorado	6	8
USC	6	8
Oregon State	5	8
Cal	5	6
Utah	5	6
Washington	5	6
Oregon	5	5
Stanford	4	7
Washington State	4	9

Destined to Start

Freshman Destiny Graham made her first career start last game against George Mason and certainly left her mark. The freshman from San Francisco, California, who played her high school ball in East Palo Alto, had 14 points and four rebounds in 31 minutes. The points and minutes both marked career highs for the 6-3 freshman. Graham was 6-6 from the free throw line and 4-6 from the floor. She scored six of the team's 15 points in overtime and also added two assists in the victory. Graham has been coming on as the season progresses. She played 28 minutes in the season opener at Toledo with the Wildcats down Dejza James and LaBrittney Jones, but didn't hit the 20-minute mark again until two games ago against Gardner-Webb, when she played exactly 20 minutes.

Scouting Stanford

The Cardinal enter Saturday's matchup ranked No. 11 in the country in both the AP Top 25 and the Coaches Top 25. Stanford is currently riding a four-game winning streak that started Dec. 16 with a 69-55 home victory over Tennessee. Since, the Cardinal has also taken down Cornell, Cal-State Bakersfield and Chattanooga. Lili Thompson, already a two-time Pac-12 Player of the Week winner, is averaging 17.2 points per game and 4.3 rebounds a contest. Erica McCall is also in double digits at 14.4 points per game and is averaging a double-double, pulling down 10.3 rebounds a contest. Karlie Samuelson and Briana Roberson are both shooting better than 40 percent from 3-point distance with Roberson at .463 and Samuelson at .415. Stanford has played

TALE OF THE TAPE

Category	Arizona	Stanford
Scoring	761	895
PPG	63.4	74.6
Scoring Margin	+8.1	+20.1
Field Goals-Attempt	286-670	315-721
Field Goal Pct.	.427	.437
3PT FGs-Attempts	62-153	97-262
3PT FG Pct.	.405	.370
3PT FG MPG	5.2	8.1
Free Throw-Attempts	127-205	168-249
Free Throw Pct.	.620	.675
Rebounds/RPG	467/38.9	532/44.3
Rebound Margin	+5.3	+5.1
Assists/APG	170/14.2	185/15.4
Turnovers/TPG	214/17.8	174/14.5
TO Margin	+0.8	-0.4
Assist/TO ratio	0.8	1.1
Steals/SPG	113/9.4	83/6.9
Blocks/BPG	54/4.5	76/6.3

just three true road games this season, beating UC-Davis and Gonzaga and losing to Texas by eight earlier this month.

Last Time Versus the Cardinal

The last time Stanford visited McKale Center, Arizona fans were treated to a game they will never forget. The Wildcats upset No. 12 Stanford 60-57 to break a 24-game winning streak by the Cardinal in the series. Candice Warthen, a senior last year, hit the game-winning bucket with three seconds left to give Arizona a win over a top-15 team for a second straight year. In 2014, Arizona took down No. 11 Arizona State. On top of double digit scoring performances from Warthen and Breanna Workman, JaLea Bennett added eight points and LaBrittney Jones had six points to go with five rebounds. Both teams shot exactly 39.6 percent from the floor in the matchup. After the game, coach Niya Butts was clearly pleased with the result: "I think we believed. We believed we could win and also executed the game plan. We did a much better job in this game than we did in our first game vs. Stanford. Obviously, any time you can get a win against a ranked opponent it feels good, but mostly I feel good for our kids."

Last 10 vs. Stanford

2/8/15: Arizona 60, Stanford 57
1/16/15: Stanford 77, Arizona 47
2/16/14: Stanford 74, Arizona 48
1/17/14: Stanford 96, Arizona 52
2/8/13: Stanford 73, Arizona 43
2/4/12: Stanford 91, Arizona 51
3/11/11: Stanford 100, Arizona 71
2/5/11: Stanford 91, Arizona 61
1/6/11: Stanford 87, Arizona 54
3/12/10: Stanford 72, Arizona 52

Griffey Gets Hot

In the final game of the Puerto Rico Classic, Taryn Griffey exploded for a career-high 29 points. She tied a school record with seven 3-pointers in a game. Griffey finished 7-11 from long range and added four assists in 26 minutes. Griffey hit four of her seven 3-pointers in the final quarter and

helped turn a seven-point game into a 19-point win for the Wildcats. Griffey, who has scored in double figures five times this season, put together her first career 20-point game in the win over Gardner-Webb. The freshman guard was 5 of 6 from 3-point range in 13 second-half minutes against the Bulldogs. Her 13 minutes in the second half were second to just Jones, who played 16.

It's A Bench Party

Malena Washington's production has been a big reason why Arizona's bench has been so dangerous this season. Through 12 games, the bench is outscoring opponents 348-163. Last game, the Wildcats lost the bench scoring battle for just the first time all season. That came on the heels of the bench outscoring Gardner-Webb 35-9, with LaBrittney Jones leading the way with 14 points. Arizona also held a 21-2 bench points advantage against SMU in the first game of the Puerto Rico Classic. The team's highest output of the season came against Louisiana Tech, when the Cats bench scored 44 points. Dejza James led the way for the bench squad, scoring 16 points. Washington added 11. Arizona's bench has scored at least 20 points in every game this season. Conversely, the Wildcats have only allowed 20 points or more three times.

Bench Scoring

vs. George Mason : 22-24
vs. Gardner-Webb: 35-9
vs. Florida Gulf Coast: 25-17
vs. SMU: 21-2
vs. Louisiana Tech: 44-18
vs. Pacific: 40-25
vs. NMSU: 32-13
at North Texas: 16-3
vs. Kansas: 31-11
at San Diego: 29-9
vs. Howard: 26-6
at Toledo: 27-26
Total: 245-111

Leader of the Bench

Junior guard Malena Washington continues to be a force off the bench for the Wildcats. Washington is leading the team in scoring at 11.3 points per game and twice this season set a career high in points. Against New Mexico State, Washington set a new career mark with 17 points in 27 minutes. One game later, Washington poured in 21 points against Pacific, resetting her career high. She also hit a career best five 3-pointers in the win over the Tigers. A big key to Washington's scoring success this season has been her touch from long distance. The junior from Beaumont, Texas is 18 of 50 from 3-point range through 12 games this season. Last year, Washington was just nine of 45 from deep the entire season and never had more than three in a game. Even though Washington is coming off the bench, she's third in minutes per game at 22.9.

SITUATIONAL STATISTICS

Overall	9-3
vs. Pac-12 teams	0-0
vs. Non-Conference foes	8-3
At home	6-0
On the road	2-1
At neutral sites	1-2
In overtime	0-0
In double overtime	0-0
vs. Ranked Teams	0-0
vs. Teams Receiving Votes for Top 25	0-0
In games decided by 3 points or less	1-1
In games decided by 4-5 points	1-1
In games decided by 6-10 points	3-0
In games decided by 11-19 points	3-1
In games decided by 20-plus points	1-0
Scoring first	3-2
Leading at half	7-0
Tied at half	0-0
Trailing at half	2-3
Leading with 10:00 remaining	6-2
Trailing with 10:00 remaining	1-1
Tied with 10:00 remaining	2-0
Leading with 5:00 remaining	7-1
Trailing with 5:00 remaining	2-2
Tied with 5:00 remaining	0-0
Arizona shoots 40% or better	8-2
Arizona shoots less than 40%	0-1
Arizona shoots better than opponent	8-2
Opponent shoots better	1-1
Opponent shoots 40% or better	3-0
Arizona out-rebounds opponent	6-2
Opponent out-rebounds Arizona	3-1
Arizona shoots 70% or better from FT line	1-2
Arizona has more FT attempts	5-0
Opponent has more FT attempts	4-3
Teams have equal FT attempts	0-0
Arizona shoots 40% or better from 3-pt	6-0
Arizona has more turnovers than opponent	1-3
Arizona has less turnovers than opponent	7-0
Arizona scores 90-plus points	0-0
Arizona scores 80-89 points	0-0
Arizona scores 70-79 points	2-0
Arizona scores 60-69 points	6-0
Arizona scores 50-59 points	1-2
Arizona scores less than 50 points	0-1
Opponent scores 90-plus points	0-0
Opponent scores 80-89 points	0-0
Opponent scores 70-79 points	0-0
Opponent scores 60-69 points	4-0
Opponent scores 50-59 points	3-3
Opponent scores less than 50 points	2-0
Arizona bench scores more	9-2
Opponent bench scores more	1-0
Arizona scores more fast break points	4-0
Opponent scores more fast break points	1-0
Fast break points are even	4-3
Arizona scores more points in the paint	7-0
Opponent scores more points in the paint	2-3
Arizona scores more points off turnovers	6-1
Opponent scores more points off turnovers	1-2
Points off turnovers are even	2-0
Arizona has more second chance points	5-0
Opponent has more second chance points	4-3
Second chance points are equal	0-0
Arizona Streaks...	
Current streak	W2
Homecourt streak	W7
Road streak	W1
Neutral court streak	W1
Last 5 games	3-2
Last 10 games	7-3
Arizona By Month...	
November	4-1
December	5-2
January	0-0
February	0-0
March	0-0
Arizona By Day Of The Week...	
Sunday	0-1
Monday	2-0
Tuesday	1-0
Wednesday	2-0
Thursday	1-0
Friday	1-0
Saturday	2-2
Arizona By Time...	
Day	5-1
Night	4-2



ARIZONA IN THE PAC-12 (2014-15)

Team Category	Total	Place	Leader
Scoring Offense	58.1	11th.....	Washington (75.0)
Scoring Defense	66.6	10th.....	Arizona State (55.9)
Scoring Margin	-8.5	12th	Oregon State (+15.7)
Free Throw Pct.	.713	5th.....	Washington (.780)
Field Goal Pct.	.365	12th.....	Oregon State (.454)
Field Goal Pct. Defense	.425	10th.....	Oregon State (.352)
3-Point Pct.	.241	12th.....	Colorado (.382)
3-Point Pct. Defense	.301	4th.....	Arizona State (.249)
Rebounding Offense	37.4	10th.....	Oregon State (42.8)
Rebounding Defense	39.2	10th.....	Arizona State (31.3)
Rebounding Margin	-1.8	11th.....	Oregon State (+8.5)
Blocked Shots	3.0	9th.....	Oregon State (5.9)
Assists Per Game	9.9	12th.....	Oregon State (18.6)
Steals Per Game	5.5	9th.	Washington St. (10.0)
Turnover Margin	-0.57	8th.....	Washington St. (+5.5)
Assist-to-Turnover Ratio	0.7	12th.....	Oregon State (1.3)
Offensive Rebounds	12.8	6th.....	USC (14.9)
Defensive Rebounds	24.6	9th.....	Oregon State (30.4)
Defensive Rebound Pct.	.675	10th.....	Utah (.737)
Offensive Rebound Pct.	.319	9th.....	Arizona State (.377)
3-Ptrs Made Per Game	2.2	12th.....	Oregon State (8.3)

INDIVIDUAL

Candice Warthen

Scoring (12.8 ppg, 17th)

Minutes Per Game (33.4 , 8th)

Free Throw Percentage (81.7%, 5th)

LaBrittney Jones

Blocks (1.5 bpg, 4th)

Offensive Rebounding (2.2, 14th)

Free Throw Percentage (76.4%, 13th)

Shoot That 3, Hit That 3

Through 12 games this season, Arizona has proven it has plenty of shooters who can hit from deep. The Wildcats are 62-153 from 3-point range this season (a .405 shooting percentage), which is sixth in the country. On top of the sharpshooting from Taryn Griffey and Malena Washington, Arizona has gotten solid contributions from other spots as well. Freshman Michal Miller is 10-24 and sophomore Ja-Lea Bennett is 7-14. Bennett showed off her ability from long range against North Texas, hitting all three of her attempts from behind the line. Dejza James and Keyahndra Cannon have all also connected from three-point range this young season. Arizona's strong showing from deep comes one season after shooting .241 from three last season. With 62 3-pointers on the season, the Wildcats are just five away from tying last season's total of 67.

Taryn it Up

Redshirt freshman point guard Taryn Griffey, the daughter of 13-time Major League Baseball All-Star Ken Griffey Jr., is off to a hot start in her career after sitting out last season with a knee injury. Griffey is averaging 10.9 points per game through 11 contests. She sat out the Louisiana Tech game with a minor injury. The point guard from Seattle is doing most of her damage from beyond the 3-point line. Griffey has hit 25 of 51 3-pointers this season for a .490 shooting percentage. She is tops in the conference with that mark and 11th in the country.

Top 3-point shooters in Pac-12

1. Taryn Griffey, Arizona; .490 (25-51)
2. Kat Cooper, Oregon; .467 (21-45)
3. Lexi Bando, Oregon; .466 (27-58)
4. Brianna Roberson, Stanford; .463 (19-41)
5. Courtney Jaco, USC; .453 (34-75)

Recapping November

The Wildcats are officially through the first calendar month of the season with a 4-1 record. Last year, the Cats went 2-3 in the first month of the season. This November, Arizona scored road wins over Toledo and North Texas and home wins over Howard and Kansas. A five-point setback in a competitive affair at San Diego stands as Arizona's lone loss this season. Team leaders through one month are: Points Per Game; Malena Washington (10.9); Rebounds Per Game; Breanna Workman (5.8); Steals; Lauren Evans (9); Blocks; A'Shanti Coleman (6); 3-Point Shooting; Taryn Griffey (11-21).

Packed the House

The Wildcats drew 6,652 fans to their Monday matinee matchup with Kansas, setting a new program record for single-game attendance. Monday was School Day, where Arizona welcomed in several thousand students from local elementary schools to enjoy the game with the Jayhawks. The students helped provide an electric atmosphere that helped the Wildcats win 67-52. Kansas coach Brandon Schneider said after the game that the fans certainly had an impact: "I felt like the environment really bothered us early. We knew it was going to be loud. We knew they would have 6,000 plus with the promotion going on today. We practiced with music and crowd noise the last couple of days." The total surpassed last year's School Day of 6,268, which stood as the program record.

NUMBERS TO KNOW

85

Arizona's 2015-2016 roster returns 85 combined starts from last season. Malena Washington led the way with 25 starts in 30 games.

9.9

The Wildcats averaged 9.9 assists per game last season. Candice Warthen was tops with 83 assists in 30 games. Malena Washington was second with 64.

44

LaBrittney Jones had nearly half of Arizona's blocks last season. As a team, the Wildcats had 90 blocks. Jones finished with 44.



NATIONAL RANKINGS

ASSOCIATED PRESS = Week 7

Rk	Team	Record*	Points	Prev.
1.	Connecticut (32)	9-0	800	1
2.	South Carolina	11-0	763	2
3.	Notre Dame	9-1	725	3
4.	Baylor	12-0	712	4
5.	Texas	10-0	662	5
6.	Maryland	11-0	653	6
7.	Kentucky	10-0	595	8
8.	Mississippi State	10-1	560	9
9.	Ohio State	7-3	531	10
10.	Florida State	9-3	474	11
11.	Oregon State	8-1	461	7
12.	Stanford	8-2	442	15
13.	Duke	9-3	386	13
14.	Tennessee	8-3	383	14
15.	Northwestern	10-1	319	12
16.	Texas A&M	8-3	312	18
17.	DePaul	8-4	277	16
18.	Oklahoma	9-2	211	17
19.	UCLA	7-2	200	19
20.	South Florida	7-2	163	20
21.	California	7-2	125	21
22.	Arizona State	7-3	133	21
23.	Miami (Fla.)	11-1	124	23
24.	Michigan State	8-2	99	24
25.	Missouri	11-0	79	NR

Others receiving votes: Seton Hall 39, USC 33, Georgia 32, Virginia Tech 22, Syracuse 20, Iowa 15, Oregon 10, St. John's 8, Florida 5, Princeton 4, Nebraska 3, Oklahoma State 2, UTEP 2, Washington 1.

USA TODAY/COACHES = Week 7

Rk	Team	Record*	Points	Prev.
1.	Connecticut (32)	9-0	800	1
2.	South Carolina	11-0	764	2
3.	Notre Dame	10-1	726	3
4.	Baylor	13-0	704	4
5.	Maryland	11-0	677	5
6.	Texas	10-0	628	6
7.	Kentucky	10-0	604	8
8.	Mississippi State	11-1	535	9
9.	Oregon State	9-1	517	7
10.	Ohio State	8-3	507	12
11.	Stanford	8-2	460	14
12.	Duke	9-3	396	11
13.	Florida State	9-3	391	10
14.	Texas A&M	8-3	337	16
15.	Northwestern	10-1	322	13
16.	Tennessee	8-3	313	16
17.	South Florida	7-2	267	19
18.	California	8-2	236	20
19.	Oklahoma	9-2	206	17
20.	Miami (Fla.)	11-1	180	21
21.	Arizona State	8-3	179	23
22.	Michigan State	9-2	143	22
23.	DePaul	8-5	116	15
24.	Seton Hall	10-1	82	25
25.	Iowa	9-2	62	24

Others receiving votes: UCLA 51, Missouri 41, Georgia 40, Florida 33, Oregon 20, Syracuse 13, Virginia Tech 12, St. John's 8, Nebraska 8, Princeton 7, USC 7, Duquesne 3, Dayton 2, Army 1, Tulane 1, BYU 1.

BOLD: 2015-16 Arizona opponents

Home Sweet Home

Eight of Arizona's 10 wins last season came at the friendly confines of McKale Center and the solid play at home has rolled over to this season. The Wildcats are 6-0 at home to start the season. Arizona beat Howard 65-28, topped Kansas 67-52 on School Day and then beat New Mexico State. Arizona has won seven straight at McKale Center dating back to last season. Last season, Arizona picked up home wins against UC-Santa Barbara, Grambling State, Southern, UAB, UT-Martin, Oregon, Stanford and Utah. All total, Arizona is 11-7 in its last 18 games at McKale Center.

Fabulous Freshmen

Freshmen Taryn Griffey and Destiny Graham had memorable collegiate debuts in Arizona's 62-59 win over Toledo last week. Griffey had 18 points and was 6 of 10 from the floor. She was 6 of 9 from 3-point distance and led all scorers with her 18 points. It was the most points scored by an Arizona freshman in a debut since Davellyn Whyte poured in 27 in a 75-70 win over Iona in 2009. Griffey, a redshirt freshman, also had four assists and four rebounds and was nominated for the Pac-12 Freshman of the Week. Graham, a true freshman had two points, nine rebounds, three steals and three assists in the win over the Rockets. The nine rebounds were the most in a freshman debut since current Wildcat LaBrittney Jones pulled down 10 boards in Arizona's 2013-14 season opener against Iona.

The stellar play by the freshmen continued against Howard with even more players getting in on the action. Michal Miller, a true freshman from Michigan City, Ind., hit four of six 3-pointers and finished with 16 points in 14 minutes. Additionally, freshman post player A'Shanti Coleman made her second straight start and had eight points, five rebounds and three steals in 28 minutes. Arizona's four freshmen on the roster, Griffey, Graham, Coleman and Miller should all make an impact in their debut seasons.

Against San Diego, Griffey had five points and three rebounds. Coleman played 15 minutes and Graham saw nine minutes of action. Griffey again scored in double figures against Kansas, pouring in 17. Coleman had a career best four blocks against the Jayhawks and also converted a steal into a fast break layup.

A Valuable Addition

After transferring from Virginia Tech and sitting out last season, Lauren Evans has made her presence felt so far through three games for Arizona. Evans is averaging 22.3 minutes per game and is second on the team with 14 rebounds. She leads the team with eight offensive boards and is tied for the team lead in steals with four. Evans can play both guard and forward and has for the Wildcats this season. Evans' brother, Ryan, played four seasons at Wisconsin from 2008 to 2013.

New Faces Ready for Bright Lights

Coach Niya Butts added four new pieces to this year's roster with her 2015 recruiting class. The group consists of guard Michal Miller, forwards Destiny Graham and A'Shanti Coleman and center Eugenie Simonet-Keller.

Butts on Miller: "She's a very, very hardworking player. You know what you're going to get from her everyday, and I can certainly respect that. She can score the basketball. She does a good job with that. She has to slow down a bit and make sure she understands the entire game. But she's one of the most coachable kids we have on our team. That with her hard work, she will be an asset for us."

Butts on Graham: "She's been out for two weeks (concussion), but I like what she can do on the floor. She provides us with more size. She has a nice jumper from 15-16 feet out. She's going to add more length on the inside. I'm just looking forward to getting her back on the floor and continuing her development. I'm looking for great things from her as well."

Butts on Coleman: "Ashanti is coming along nicely. She's progressing. She's picking things up slowly, but surely. We need her to get stronger, but I like what she brings to our team. She's extremely long and athletic. I think grasping the speed of the game will really help her and us tremendously. I'm looking forward to seeing her on the floor."

Lights, Camera, Action

Twelve of Arizona's 18 conference games will be televised by Pac-12 Networks this season. Among the scheduled television games: home contests with Stanford, California and Arizona State and road tilts with Oregon State, UCLA and Washington.

About That Schedule

Arizona's nonconference schedule features road games at Toledo, San Diego and North Texas. The Wildcats will make all three trips this month, mixed in with home games against Howard and Kansas. In December, the Wildcats won't play any true road games. Instead, Arizona will travel to San Juan, Puerto Rico for three games in the Puerto Rico Classic. Arizona will play SMU, Florida Gulf Coast and Gardner-Webb. In conference play, Arizona will play Stanford and Arizona State each twice. The Cardinal and Sun Devils are both ranked in the AP Preseason Top 25. Arizona State is ranked 15th and Stanford is one spot behind at No. 16. Oregon State, ranked 10th in the preseason poll, is on the schedule just once this season. The Wildcats will travel to play the Beavers on Jan. 29.



Official Basketball Box Score -- Game Totals -- Final Statistics

Arizona vs Toledo
11/14/15 Noon at Toledo, OH (Savage Arena)

Arizona 62 • 1-0

#	Player	Total		3-Ptr		Rebounds			PF	TP	A	TO	Blk	Stl	Min
		FG-FGA	FG-FGA	FT-FTA	FT-FTA	Off	Def	Tot							
00	WORKMAN, Breanna	f	4-7	0-1	2-5	2	5	7	2	10	1	4	0	0	28
42	COLEMAN, A'Shanti	f	1-2	0-0	0-0	0	0	0	2	2	1	0	1	0	12
03	GRIFFEY, Taryn	g	6-10	6-9	0-0	0	4	4	1	18	4	4	0	1	23
15	CANNON, Keyahndra	g	1-4	0-0	0-0	0	1	1	0	2	3	3	0	1	26
33	BENNETT, JaLea	g	1-4	0-1	1-2	0	1	1	3	3	0	0	1	1	15
10	EVANS, Lauren		4-7	0-0	0-0	6	4	10	3	8	1	1	1	3	26
14	WASHINGTON, Malena		4-13	2-5	0-0	0	1	1	2	10	4	1	0	2	27
20	BELL, Ferrin		1-1	0-0	2-4	0	0	0	1	4	0	1	1	0	10
21	GRAHAM, Destiny		1-4	0-0	0-2	5	4	9	2	2	3	0	1	3	28
23	MILLER, Michal		1-4	1-2	0-0	1	0	1	0	3	0	0	0	0	5
Team						0	1	1			2				
Totals			24-56	9-18	5-13	14	21	35	16	62	17	16	5	11	200
FG % 1st Half:		11-26	42.3%	2nd half:	13-30	43.3%	Game:		24-56	42.9%	Deadball Rebounds 5.1				
3FG % 1st Half:		4-9	44.4%	2nd half:	5-9	55.6%	Game:		9-18	50.0%					
FT % 1st Half:		3-8	37.5%	2nd half:	2-5	40.0%	Game:		5-13	38.5%					

Toledo 59 • 0-1

#	Player	Total		3-Ptr		Rebounds			PF	TP	A	TO	Blk	Stl	Min
		FG-FGA	FG-FGA	FT-FTA	FT-FTA	Off	Def	Tot							
12	MONAKANA, Janice	f	0-8	0-2	0-0	2	3	5	3	0	1	0	0	1	25
32	CAPOTOSTO, Ana	f	1-3	1-2	0-2	0	1	1	4	3	0	3	0	1	22
43	REECHER, Sophie	f	4-5	0-0	3-4	1	3	4	2	11	0	1	2	0	28
01	HARRIS, Brenae	g	4-7	0-0	4-5	0	3	3	2	12	4	3	0	0	35
11	BRAVO-HARRIOTT, Jay	g	2-13	1-6	2-2	2	4	6	3	7	1	2	0	1	33
02	BOYD, Mikaela		4-6	1-1	0-0	0	2	2	0	9	3	2	0	0	12
05	ST-FORT, Sarah		0-0	0-0	0-0	0	0	0	0	0	0	0	0	0	0+
15	McINTYRE, Kaayla		2-3	0-0	1-2	2	1	3	0	5	1	2	0	1	11
22	PRINTZ, Halee		0-2	0-0	0-0	0	0	0	0	0	0	1	0	1	5
24	RASMUSSEN, Michaela		0-0	0-0	0-0	0	0	0	1	0	0	0	0	0	7
33	KESSLER, Nancy		0-0	0-0	1-2	0	1	1	0	1	0	0	0	0	1
35	WOODY, Jada		4-4	3-3	0-0	1	2	3	1	11	2	1	0	0	21
Team						4	0	4							
Totals			21-51	6-14	11-17	12	20	32	16	59	12	15	2	5	200
FG % 1st Half:		7-22	31.8%	2nd half:	14-29	48.3%	Game:		21-51	41.2%	Deadball Rebounds 2.1				
3FG % 1st Half:		2-4	50.0%	2nd half:	4-10	40.0%	Game:		6-14	42.9%					
FT % 1st Half:		7-13	53.8%	2nd half:	4-4	100.0%	Game:		11-17	64.7%					

Officials: Michelle Del Duco, Barb Smith, Bryan Enterline
Technical fouls: Arizona-None. Toledo-None.
Attendance: 3713

Score by periods	1st	2nd	3rd	4th	Total
Arizona	13	16	17	16	62
Toledo	15	8	23	13	59

Official Basketball Box Score -- Game Totals -- Final Statistics

HOWW vs Arizona
11/18/15 7:00 p.m. at McKale Center

HOWW 28 • 0-3

#	Player	Total		3-Ptr		Rebounds			PF	TP	A	TO	Blk	Stl	Min
		FG-FGA	FG-FGA	FT-FTA	FT-FTA	Off	Def	Tot							
31	THOMAS, Kiana	f	0-1	0-0	3-4	1	2	3	0	3	0	1	1	0	31
35	JOHNSON, Sydni	f	1-3	0-0	3-4	1	2	3	3	5	1	5	0	0	37
22	GONZALES, Victoria	c	4-13	0-1	6-11	2	2	4	5	14	0	6	0	0	32
11	MORRISON, Allese	g	0-3	0-0	0-0	0	6	6	1	0	0	6	0	1	27
13	SHUMATE, Da'Shae	g	0-4	0-0	0-0	0	0	0	2	0	2	2	0	0	17
03	TIMMONS, Hannah		0-1	0-1	1-2	1	0	1	0	1	0	0	0	1	10
04	TARVER, Shaylon		1-6	1-3	2-2	0	1	1	2	5	0	2	0	0	19
10	DOPSON, Tajzhane		0-2	0-1	0-0	0	1	1	4	0	0	1	2	0	12
23	BROWN, Essence		0-6	0-1	0-0	3	0	3	1	0	0	6	0	3	15
Team						3	5	8			1				
Totals			6-39	1-7	15-23	11	19	30	18	28	3	30	3	5	200
FG % 1st Half:		3-19	15.8%	2nd half:	3-20	15.0%	Game:		6-39	15.4%	Deadball Rebounds 4.1				
3FG % 1st Half:		0-1	0.0%	2nd half:	1-6	16.7%	Game:		1-7	14.3%					
FT % 1st Half:		8-11	72.7%	2nd half:	7-12	58.3%	Game:		15-23	65.2%					

Arizona 65 • 2-0

#	Player	Total		3-Ptr		Rebounds			PF	TP	A	TO	Blk	Stl	Min
		FG-FGA	FG-FGA	FT-FTA	FT-FTA	Off	Def	Tot							
00	WORKMAN, Breanna	f	0-1	0-0	0-0	1	4	5	2	0	3	4	0	2	22
42	COLEMAN, A'Shanti	f	3-6	0-0	2-2	1	4	5	3	8	0	1	0	3	28
03	GRIFFEY, Taryn	g	3-5	1-3	0-2	1	1	2	0	7	4	0	1	1	20
15	CANNON, Keyahndra	g	2-7	1-1	1-1	1	2	3	2	6	0	4	0	3	22
33	BENNETT, JaLea	g	7-12	2-2	2-4	3	1	4	3	18	1	1	0	1	21
10	EVANS, Lauren		0-2	0-0	0-0	1	2	3	4	0	0	1	1	1	19
14	WASHINGTON, Malena		2-8	1-3	2-2	0	3	3	2	7	4	2	0	2	26
20	BELL, Farrin		1-3	0-0	1-2	2	3	5	2	3	4	1	0	0	12
21	GRAHAM, Destiny		0-1	0-0	0-0	1	0	1	4	0	1	0	0	0	16
23	MILLER, Michal		5-7	4-6	2-4	0	2	2	2	16	0	3	0	2	14
Team						2	3	5			2				
Totals			23-52	9-15	10-17	13	25	38	24	65	17	19	2	15	200
FG % 1st Half:		14-28	50.0%	2nd half:	9-24	37.5%	Game:		23-52	44.2%	Deadball Rebounds 3.1				
3FG % 1st Half:		6-10	60.0%	2nd half:	3-5	60.0%	Game:		9-15	60.0%					
FT % 1st Half:		1-5	20.0%	2nd half:	9-12	75.0%	Game:		10-17	58.8%					

Officials: LISA JONES, KENT JOHNSON, TIFFANY BIRD
Technical fouls: HOWW-None. Arizona-None.
Attendance: 778
Fouled Out: Howard-Gonzales, Victoria 1:08 2H

Score by periods	1st	2nd	3rd	4th	Total
HOWW	8	6	7	7	28
Arizona	20	15	17	13	65

Recap of Toledo

TOLEDO, Ohio – Thanks to strong defense and key shooting, the Arizona Wildcats erased a third-quarter deficit to top host Toledo 62-59 in their season opener Saturday afternoon at Savage Arena.

Taryn Griffey, in her first official game as a Wildcat, scored a game-high 18 points on 6 of 9 shooting from 3-point distance. Lauren Evans, also playing her first game at Arizona, finished with eight points, 10 rebounds and three steals in the win.

Juniors Malena Washington and Breanna Workman added 10 points apiece for the Wildcats.

"It was a great, great environment for us to play in," Coach Niya Butts said.

"It was a tough road environment, a tough team and our kids really hung tough. Toledo made a run on us in the third, and we were able to answer that run and hold on. Everybody on our roster did well when they were in there and helped us pull it out."

Toledo took a 42-36 lead over Arizona with 3:51 to play in the third on a 3-pointer from Jade Woody. The Wildcats instantly responded with a 3-pointer from Washington and after two free throws from Toledo, Griffey hit a 3 to close it to 44-42. Toledo again scored to make it 46-42, but the Wildcats scored the final four points of the quarter to tie it up entering the fourth. Washington hit a jump shot and Breanna Workman connected on a layup. The Rockets scored the first basket of the fourth quarter, but Griffey hit another 3-pointer to give the Wildcats a 49-48. Arizona never trailed again. Griffey and Evans scored the first 10 points of the quarter for the Wildcats and led by as many as six with less than five minutes to go. Toledo eventually tied the game at 57, but Washington came up with a big steal and found Keyahndra Cannon ahead for a driving layup to put the Wildcats up 59-57. Toledo responded with a bucket to tie it, but Workman hit a post layup to put Arizona up for good. The junior forward added a free throw to make it 62-59, which held up as the final.

Recap of Howard

TUCSON, Ariz. – The Arizona Wildcats improved to 2-0 Wednesday night with a 65-28 win over the Howard Bison and made some history in doing so. Howard was just 6 of 39 from the floor, marking the fewest field goals allowed in a game by Arizona in program history.

The Bison's shooting percentage of .154 was also the lowest ever allowed by Arizona and tied a Pac-12 mark that Stanford set against Pacific in 2003. "Our goal was to hold them to 46 points or less, and they scored 28 and that's pretty good," Coach Niya Butts said. "That is certainly a highlight. We forced them into 30 turnovers and got 15 steals. Those are all good things defensively. We still have to get better rebounding, but it was good tonight." Howard scored more from the free throw line – 15 points—than they did from the field where they produced just 13 points against Arizona's stingy defense. The Bison had three field goals in the first half and three more in the second.

"It's not very often that a team does that," freshman guard Michal Miller said of limiting Howard to just six field goals. But when you do, you have to take pride in that because it is hard to keep a team from scoring."

The Wildcats didn't have any trouble finding the bottom of the McKale Center nets on their end in the victory.

The Wildcats shot 9 of 15 from 3-point distance and 23 of 52 overall. Sophomore guard Jalea Bennett set a new career high with 18 points, knocking down both of her 3-pointers.

Miller, in just her second collegiate game, connected on four of six from deep range.

"I really like this group," Butts said. "The issue with us is just figuring out who plays well together and knocking down those shots at the right time. We had a lot of young folks out there. I looked out there at one point and we had three freshman on the floor and that's both a good and bad thing. When you are turning the ball over sometimes or not knowing exactly what you should be in offensively, it's bad, but I like the way we are shooting the ball from the outside."



Official Basketball Box Score -- Game Totals -- Final Statistics

Arizona vs San Diego
11/21/15 4:05 PM at Jenny Craig Pavilion**Arizona 54 • 2-1**

#	Player		Total		3-Ptr		Rebounds			PF	TP	A	TO	Blk	Stl	Min
			FG-FGA	FG-FGA	FT-FTA	FT-FTA	Off	Def	Tot							
00	WORKMAN, Breanna	f	3-6	0-1	4-6	1 6 7	3	10	2 4 1	1	30					
42	COLEMAN, A'Shanti	f	1-2	0-0	0-0	0 1 1	2	2	0 0 1	0	15					
03	GRIFFEY, Taryn	g	2-8	1-2	0-0	1 2 3	1	5	2 0 1	0	23					
15	CANNON, Keyahndra	g	4-6	0-0	0-0	0 3 3	2	8	1 1 0	0	35					
33	BENNETT, JaLea	g	0-3	0-0	0-0	0 0 0	2	0	2 0 1	0	22					
10	EVANS, Lauren		3-7	0-0	0-0	1 0 1	3	6	0 1 0	0	22					
14	WASHINGTON, Malena		4-10	2-4	0-0	1 0 1	4	10	4 6 0	0	9					
20	BELL, Farrin		1-1	0-0	0-0	1 2 3	2	2	1 0 0	0	8					
21	GRAHAM, Destiny		1-2	0-0	1-1	0 2 2	2	3	0 0 1	0	9					
23	MILLER, Michal		0-1	0-1	0-0	0 0 0	0	0	0 0 0	1	6					
31	JAMES, Dejza		4-10	0-0	0-2	2 8 10	4	8	0 3 0	1	21					
Team						5 1 6			1							
Totals			23-56	3-8	5-9	12 25 37	25	54	12 16 5	3	200					

FG % 1st Half: 9-28 32.1% 2nd half: 14-28 50.0% Game: 23-56 41.1%
3FG % 1st Half: 1-4 25.0% 2nd half: 3-7 42.9% Game: 3-8 37.5%
FT % 1st Half: 2-2 100.0% 2nd half: 3-7 42.9% Game: 5-9 55.6%

Deadball
Rebounds
2

San Diego 59 • 3-0

#	Player		Total		3-Ptr		Rebounds			PF	TP	A	TO	Blk	Stl	Min
			FG-FGA	FG-FGA	FT-FTA	FT-FTA	Off	Def	Tot							
44	WILLIAMS, Sydney	f	2-9	0-4	0-2	2 2 4	4	4	1 1 0	0	31					
11	HOOD, Malina	g	7-15	1-5	5-6	1 6 7	2	20	1 3 0	2	38					
22	HOOD, Maya	g	4-9	0-0	4-5	6 6 12	2	12	2 3 2	3	40-					
25	HAMILTON, Katherine	g	2-5	0-1	6-6	0 5 5	3	10	5 2 2	1	22					
32	WOODWARD, Cori	g	1-5	1-2	1-2	0 4 4	0	4	0 0 0	0	36					
02	HEPBURN, Tayla		1-1	0-0	1-1	0 0 0	0	3	0 1 0	0	7					
05	WARD-EL, Aubrey		3-8	0-1	0-0	2 0 2	2	6	1 2 0	1	13					
24	BUHR, Caroline		0-1	0-0	0-0	0 0 0	2	0	1 1 0	0	13					
Team						1 0 1			2							
Totals			20-53	2-13	17-22	12 23 35	15	59	11 15 4	7	200					

FG % 1st Half: 8-26 30.8% 2nd half: 12-27 44.4% Game: 20-53 37.7%
3FG % 1st Half: 0-7 0.0% 2nd half: 2-6 33.3% Game: 2-13 15.4%
FT % 1st Half: 9-10 90.0% 2nd half: 8-12 66.7% Game: 17-22 77.3%

Deadball
Rebounds
1

Officials: Shelly Russi, Wanda Szeremeta, Cheryl Blue

Technical fouls: Arizona-None, San Diego-None.

Attendance: 714

Score by periods	1st	2nd	3rd	4th	Total
Arizona	9	12	18	15	54
San Diego	15	10	19	15	59

Last FG - ARIZ 4th-00:35, USD 4th-03:55.
Largest lead - ARIZ None, USD by 10 3rd-03:06.

Points	In	Off	2nd	Fast	Bench
ARIZ	8	14	2	0	29
USD	10	15	0	0	9

Score tied - 1 time.
Lead changed - 0 times.

Official Basketball Box Score -- Game Totals -- Final Statistics

University of Kansas vs Arizona
11/23/15 11 a.m. at McKale Center**University of Kansas 52 • 2-1**

#	Player		Total		3-Ptr		Rebounds			PF	TP	A	TO	Blk	Stl	Min
			FG-FGA	FG-FGA	FT-FTA	FT-FTA	Off	Def	Tot							
04	Brown, Jada	f	3-6	0-1	2-4	2 2 4	4	8	0 3 0	0	23					
25	ManningAllen, Caelynn	f	5-6	0-0	1-1	2 6 8	3	11	0 2 4	0	29					
03	Aldridge, Lauren	g	5-11	2-6	2-2	1 2 3	4	14	4 3 0	1	31					
15	Robertson, Aisia	g	1-10	0-1	0-0	0 3 3	3	2	0 1 0	0	19					
33	Kopach, Kylee	g	1-12	1-8	3-4	0 5 5	4	6	2 3 1	0	33					
12	O'Neal, Timeka		1-3	1-3	0-0	0 2 2	2	3	1 1 0	0	20					
13	Enabulele, Lorraine		1-1	0-0	0-0	2 0 2	1	2	0 0 0	0	4					
20	Christopher, Jayde		0-2	0-0	0-0	0 0 0	2	0	1 1 0	1	9					
22	Cheadle, Chayla		1-4	0-1	2-2	1 1 2	2	4	1 2 0	0	25					
55	Johnson, Tyler		1-4	0-0	0-0	2 1 3	1	2	0 1 0	0	7					
Team						3 3 6										
Totals			19-59	4-20	10-13	13 25 38	26	52	9 17 5	2	200					

FG % 1st Half: 9-30 30.0% 2nd half: 10-29 34.5% Game: 19-59 32.2%
3FG % 1st Half: 1-9 11.1% 2nd half: 3-11 27.3% Game: 4-20 20.0%
FT % 1st Half: 9-10 90.0% 2nd half: 1-3 33.3% Game: 10-13 76.9%

Deadball
Rebounds
0

Arizona 67 • 3-1

#	Player		Total		3-Ptr		Rebounds			PF	TP	A	TO	Blk	Stl	Min
			FG-FGA	FG-FGA	FT-FTA	FT-FTA	Off	Def	Tot							
00	WORKMAN, Breanna	f	1-2	0-0	0-0	1 5 6	3	2	1 3 0	1	25					
42	COLEMAN, A'Shanti	f	1-2	0-0	0-0	1 2 3	2	2	0 1 4	1	22					
03	GRIFFEY, Taryn	g	6-9	3-5	2-4	0 2 2	3	17	2 2 0	1	23					
15	CANNON, Keyahndra	g	2-4	0-1	0-0	0 2 2	1	4	0 2 0	0	18					
33	BENNETT, JaLea	g	4-13	1-2	2-5	2 3 5	2	11	0 1 0	0	23					
10	EVANS, Lauren		0-2	0-0	1-2	0 1 1	4	1	0 0 0	1	11					
11	HARRIS, Cherice		0-1	0-0	0-0	0 0 0	0	0	0 0 0	0	3					
14	WASHINGTON, Malena		6-12	1-2	3-3	0 2 2	2	16	0 3 0	1	22					
20	BELL, Farrin		1-2	0-0	1-4	2 1 3	1	3	4 1 1	0	17					
21	GRAHAM, Destiny		0-2	0-0	2-2	2 2 4	2	2	0 0 0	0	14					
23	MILLER, Michal		1-1	1-1	0-0	1 0 1	1	3	0 0 0	0	5					
31	JAMES, Dejza		1-6	1-1	3-6	2 3 5	1	6	2 1 0	0	17					
Team						4 7 11										
Totals			23-56	7-12	14-26	15 30 45	22	67	9 14 5	5	200					

FG % 1st Half: 9-26 34.6% 2nd half: 14-30 46.7% Game: 23-56 41.1%
3FG % 1st Half: 3-7 42.9% 2nd half: 4-5 80.0% Game: 7-12 58.3%
FT % 1st Half: 10-16 62.5% 2nd half: 4-10 40.0% Game: 14-26 53.8%

Deadball
Rebounds
5

Officials: Robert Scofield, Shelly Nakasone, Lorena Ahumada

Technical fouls: University of Kansas-None, Arizona-None.

Attendance: 6652

Score by periods	1st	2nd	3rd	4th	Total
University of Kansas	12	16	9	15	52
Arizona	12	19	14	22	67

Last FG - KU 4th-00:59, ARIZ 4th-00:35.
Largest lead - KU by 6 1st-05:30, ARIZ by 20 4th-06:00.

Points	In	Off	2nd	Fast	Bench
KU	24	12	9	0	11
ARIZ	30	17	12	6	31

Score tied - 5 times.
Lead changed - 9 times.

Recap of San Diego

SAN DIEGO, Calif. – Despite 10 points each from Breanna Workman and Malena Washington, the Arizona Wildcats suffered their first loss of the season Saturday evening 59-54 to the University of San Diego.

Arizona (2-1) outrebounded San Diego and posted more assists than the Toreros, but couldn't pull out a second road victory this season at Jenny Craig Pavilion.

The Wildcats worked to climb back from an early hole and pulled even once and within two several times. It's Arizona's first setback after a 62-59 win over Toledo and a 65-28 victory at home against Howard.

"It's the same thing we talked about at the end of Howard; I looked at that performance and I knew, just on the stat sheet, what we weren't doing defensively," Coach Niya Butts said. "I knew being undisciplined would cost us. We put Howard at the free throw line a lot, and the same with San Diego. They went 22 times and we lost by five. Certainly, I want to give San Diego credit. They came out and did what they had to do to win the game, and we did not."

The Toreros opened the game on an 8-0 run. Four of their early eight points came from the free throw line. The Wildcats got on the board with 4:45 to play in the first quarter when junior guard Malena Washington hit a jump shot. San Diego (3-0) extended its lead to 13-4 with just more than a minute to go in the quarter when Malina Hood connected on a pair of free throws. But the Wildcats started battling back and cut into the lead. Taryn Griffey hit a 3-pointer in the first quarter for the third straight game to cut it to 13-7. Breanna Workman then hit a pair of free throws to get it to 13-9.

San Diego then built a 21-15 lead with 4:30 to play in the half before the Wildcats again started marching back. Lauren Evans hit a bucket to cut it to four and then Keyahndra Cannon, playing in her home town of San Diego, hit a baseline jumper to make it 21-19. The Wildcats tied the game for the first time when junior Dejza James hit a layup with 1:31 left in the first half.

Recap of Kansas

Tucson, Ariz. – In front of the largest crowd in program history, the Arizona Wildcats surged by the Kansas Jayhawks in the second half to post a 67-52 win Monday afternoon at McKale Center.

The Wildcats improved to 3-1 on the young season with the victory, which came in front of 6,652 fans on School Day. Taryn Griffey led the Wildcats with 17 points and Malena Washington added 16. Sophomore JaLea Bennett also finished in double figures with 11 points.

"I am really happy with the way our team battled," coach Niya Butts said. "We responded from a tough road loss at San Diego against a tough team. To come in here with only one day in between and being able to respond to a scouting report that was pretty lengthy, to a team that has a lot of drivers, our kids responded really well today, the young kids especially."

The Wildcats led by just one point, 38-37, with 4:41 to play in the third quarter before exploding for a 20-1 run to take control of the game. Washington started the spurt with a layup and after Farrin Bell connected for a bucket, Washington hit another one to make it 44-37. Lauren Evans added a free throw to make it an eight-point lead at the end of the third quarter.

In the fourth, Griffey opened the quarter with back-to-back 3-pointers to increase Arizona's lead to 14 at 51-37 with 8:39 to play in the game. After a layup from Bennett, Griffey connected for five straight points – a layup and another 3-pointer – to make it 58-38.

Griffey finished six of nine from the floor and three of five from deep. The redshirt freshman guard is now 11 of 19 from 3-point distance this season. "The first half, I was really focused on driving to the basket, so the second half it would open up opportunities for three-pointers," Griffey said. "This game I wanted to focus on more than just shooting from three. Coach Butts has been telling me to drive to the basket more, so I just wanted to do what she has been wanting me to do."

Griffey scored 13 of her 17 in the second half and was Arizona's leading scorer for the second time this season.

"Taryn has the green light to take that shot at any time, but the deeper into the season we go, people start to play you for that so she really needs to put the ball on the floor, get some mid-range shots, and she did that today," Butts said. "I think that's why it opened up for her a bit on the outside."



Official Basketball Box Score -- Game Totals -- Final Statistics

Arizona vs North Texas
11/27/15 2:00 PM at Denton, TX (The Super Pit)**Arizona 51 • 4-1**

#	Player		Total			3-Ptr			Rebounds			PF	TP	A	TO	Blk	Stl	Min
			FG-FGA	FG-FGA	FT-FTA	Off	Def	Tot										
00	WORKMAN, Breanna	f	4-10	0-1	7-10	2	2	4	3	15	1	3	0	0	35			
42	COLEMAN, A'Shanti	f	0-1	0-0	0-0	0	2	2	0	0	0	0	0	1	18			
03	GRIFFEY, Taryn	g	1-4	0-2	1-2	0	1	1	1	3	0	3	1	0	18			
15	CANNON, Keyahndra	g	0-0	0-0	0-0	0	4	4	0	0	3	0	0	1	17			
33	BENNETT, JaLea	g	6-9	3-3	2-3	0	2	2	4	17	0	2	0	2	28			
10	EVANS, Lauren	g	2-3	0-0	1-1	1	5	6	1	5	1	0	0	4	20			
14	WASHINGTON, Malena	g	4-7	0-1	1-2	0	1	1	3	9	0	5	0	2	19			
20	BELL, Farrin	g	0-1	0-0	0-0	1	2	3	2	0	2	2	0	1	18			
21	GRAHAM, Destiny	g	0-2	0-0	0-2	0	0	0	1	0	0	2	0	2	9			
23	MILLER, Michal	g	1-1	0-0	0-0	0	0	0	0	2	0	1	0	0	1			
31	JAMES, Dejza	g	0-2	0-0	0-0	0	1	1	3	0	1	3	0	1	17			
Team						1	1	2			3							
Totals			18-40	3-7	12-20	5	21	26	18	51	8	24	1	14	200			
FG % 1st Half: 9-21			42.9%	2nd half: 9-19	47.4%	Game: 18-40			45.0%	Deadball Rebound 3								
3FG % 1st Half: 3-4			75.0%	2nd half: 0-3	0.0%	Game: 3-7			42.9%									
FT % 1st Half: 3-7			42.9%	2nd half: 9-13	69.2%	Game: 12-20			60.0%									

North Texas 44 • 1-3

#	Player		Total		3-Ptr		Rebounds			PF	TP	A	TO	Blk	Stl	Min
			FG	FGA	FT	FTA	Off	Def	Tot							
23	TAC, Acheil	f	3-6	0-0	2-2	3	9	12	4	8	0	2	1	1	40	
24	FRIERSON, Bria	c	0-2	0-0	0-0	1	3	4	5	0	1	4	0	2	21	
03	CRINER, Kelsey	g	4-10	0-3	2-6	1	6	7	2	10	3	9	0	1	37	
14	ADAMS, Candice	g	3-12	3-11	3-4	1	0	1	4	12	2	1	0	1	23	
20	ELLISON, Terra	g	5-8	1-3	0-2	2	1	3	1	11	1	4	0	0	33	
02	JONES, Teadra	g	0-2	0-1	0-0	1	1	2	1	0	1	0	0	0	10	
10	WILLIAMS, Kasiney	g	1-1	1-1	0-2	0	0	0	2	3	1	3	0	1	21	
15	JOLIVETTE, Brooke	g	0-2	0-1	0-0	0	1	1	1	0	0	1	0	0	3	
30	MABODU, Tosin	g	0-1	0-0	0-0	1	0	1	2	0	0	2	0	2	12	
Team								2	1	3						
Totals			16-44	5-20	7-16	12	22	34	22	44	9	26	1	8	200	
FG % 1st Half:		11-24	45.8%	2nd half:	5-20	25.0%	Game:	16-44	36.4%	Deadball Rebound 4						
3FG % 1st Half:		3-8	37.5%	2nd half:	2-12	16.7%	Game:	5-20	25.0%							
FT % 1st Half:		3-6	50.0%	2nd half:	4-10	40.0%	Game:	7-16	43.8%							

Officials: R:Michael Price, U1:Tiffany Bird, U2:Michelle Kramer
Technical fouls: Arizona-None. North Texas-None.
Attendance: 961

Score by periods		1st	2nd	3rd	4th	Total
Arizona		11	13	8	19	51
North Texas		18	10	4	12	44

Last FG - ARIZ 4th-00:56, NT 4th-01:17.

Score tied - 3 times.

Recap of North Texas

DENTON, Texas – A strong showing defensively in the second half and a big game from sophomore JaLea Bennett propelled the Arizona Wildcats to a 51-44 win at North Texas on Friday afternoon.

The Wildcats (4-1) allowed just four points in the third quarter and held the Mean Green without any points for more than five minutes in the second half. Thanks to the strong defense and some halftime adjustments, the Cats were able to turn a four-point halftime deficit into a seven-point victory.

"We made some adjustments on their ball screens where they were attacking us a lot in the first half and we were helping too much," Coach Niya Butts said. "And we just locked in from there. We got aggressive on the offensive end and just started to make some plays."

Trailing by four at half, Bennett and Taryn Griffey hit back-to-back buckets early in the third to tie the game at 28 with 6:55 to play in the third. North Texas scored the next four in a low-scoring quarter to take a 32-28 lead with 4:48 left in the quarter. The Wildcats didn't allow the Mean Green to score the rest of the quarter and got a jumper from Malena Washington and two free throws from Bennett to tie the game at 32 at the end of the quarter. The strong defensive play and fluid offense carried over to the fourth quarter. Breanna Workman connected on a layup 26 seconds into the quarter to give Arizona its first lead of the game at 34-32. The Cats never gave the lead back from there.

A little more than two minutes later, Bennett hit a jumper and then Workman followed with another basket with 6:39 left to give the Cats a six-point lead. The Mean Green cut it to three, but Workman hit another layup in the paint to give the Cats a 40-35 lead at the final media timeout with 4:27 to play. The Wildcats stretched their lead to eight on three more free throws from Workman. A Candice Adams 3-pointer cut the lead to five with 3:07 to play, but the Wildcats never allowed the Mean Green to get any closer the rest of the game.

Official Basketball Box Score -- Game Totals -- Final Statistics**New Mexico State vs Arizona**
12/2/15 7 p.m. at McKale Center**New Mexico State 64 • 6-1**

#	Player		Total		3-Ptr		Rebounds			PF	TP	A	TO	Blk	Stl	Min
			FG-FGA	FT-FTA	FG-FGA	FT-FTA	Off	Def	Tot							
24	Freeman, Brianna	f	1-5	0-0	1-2	1	4	5	4	3	0	3	0	0	19	
04	Weber, Sasha	g	5-9	3-7	3-3	0	2	2	2	16	0	4	0	5	34	
05	Salas, Brooke	g	5-16	0-3	0-0	0	8	8	2	10	0	3	2	2	24	
11	Davis, Shanice	g	1-7	0-3	0-0	1	3	4	2	7	5	0	1	34		
21	William, Tamera	g	6-9	2-3	6-6	0	1	1	3	20	0	2	0	2	37	
12	Williams, Zaire		0-1	0-1	0-0	0	1	1	1	0	2	3	0	0	13	
22	Ellis, Tyler		1-3	0-0	0-0	0	1	1	1	2	1	1	0	0	19	
23	Scott, Abby		4-5	3-4	0-0	0	1	1	5	11	0	0	0	2	19	
50	Taylor, Tyesha		0-0	0-0	0-0	0	2	2	2	0	0	1	0	0	1	
Team						3	1	4								
Totals				23-55	8-21	10-11	5	24	29	22	64	10	22	2	12	200
FG % 1st Half: 12-32 37.5%			2nd half: 11-23 47.8%	Game: 23-55 41.8%			Deadball Rebound 0									
3FG % 1st Half: 4-13 30.8%			2nd half: 4-8 50.0%	Game: 8-21 38.1%												
FT % 1st Half: 1-2 50.0%			2nd half: 9-9 100.0	Game: 10-11 90.9%												

Arizona 68 • 5-1

		Total	3-Ptr	Rebounds					PF	TP	A	TO	Blk	Stl	Min
#	Player	FG-FGA	FG-FGA	FT-FTA	Off	Def	Tot								
00	WORKMAN, Breanna	f	5-8	0-0	1-3	2	3	5	4	11	0	4	0	4	28
42	COLEMAN, A'Shanti	f	1-2	0-0	0-2	0	2	2	3	2	0	1	0	0	10
03	GRIFFEY, Taryn	g	5-7	3-5	1-2	1	1	2	2	14	2	1	0	1	22
15	CANNON, Keyahndra	g	1-3	0-0	0-0	0	0	0	1	2	0	1	0	0	12
33	BENNETT, JaLea	g	2-5	0-2	3-4	0	1	1	2	7	1	2	1	3	20
10	EVANS, Lauren	g	2-3	0-0	2-2	1	0	1	1	6	1	1	0	2	25
11	HARRIS, Cherice	g	0-0	0-0	0-0	0	0	0	0	0	0	0	0	0	2
14	WASHINGTON, Malena	g	6-14	1-6	4-5	1	2	3	2	17	3	4	0	1	27
20	BELL, Farrin	g	0-2	0-0	0-0	0	3	3	0	0	2	3	0	0	20
21	GRAHAM, Destiny	g	0-1	0-0	2-4	1	3	4	2	2	2	0	0	0	10
23	MILLER, Michal	g	0-1	0-0	0-0	0	0	0	0	0	0	1	0	0	3
31	JAMES, Dejza	g	3-8	0-0	1-3	2	11	13	1	7	0	4	2	1	21
Team						3	2	5							
Totals			25-54	4-13	14-25	11	28	39	18	68	11	22	3	12	200
FG % 1st Half: 10-26 38.5%		2nd half: 15-28 53.6%		Game: 25-54 46.3%		Deadball Rebound 5									
3FG % 1st Half: 3-8 37.5%		2nd half: 1-5 20.0%		Game: 4-13 30.8%											
FT % 1st Half: 5-10 50.0%		2nd half: 9-15 60.0%		Game: 14-25 56.0%											

Officials: Charles Gonzales, Darren Krzesnik, Teresa Turner
Technical fouls: New Mexico State-None. Arizona-None.
Attendance: 741

Score by periods		1st	2nd	3rd	4th	Total
New Mexico State		23	6	20	15	64
Arizona		13	15	17	23	68

Recap of New Mexico State

TUCSON, Ariz. – The Arizona Wildcats erased a 16-point first half deficit to top New Mexico State 68-64 Wednesday night at McKale Center.

Junior Malena Washington led the way for the Wildcats with 17 points. Taryn Griffey added 14 and Breanna Workman finished with 11.

"Sometimes you need to win the tough ones, and tonight we certainly did that," coach Niya Butts said. "I want to give credit to New Mexico State because they came in here and executed their game plan, but in the end we just made more plays than they did."

The Wildcats, who were in a 13-0 hole to start the game, used some hot play from Griffey and solid defense to climb back in the contest after trailing 23-7 late in the first quarter. Griffey hit back-to-back 3-pointers in the final 36 seconds of the quarter to make it 23-13 at the end of the first.

Early in the second, Griffey hit a long two-point jumper and then found Keyahndra Cannon on a fast break for a layup to cut it to 23-17.

Malena Washington drilled a 3-pointer from the corner to cut it to two, but the Aggies responded with a make from deep range as well to take a five-point lead. Dejza James hit a layup to make it a three-point game and then Lauren Evans hit a jumper to cut it to one.

After a New Mexico State bucket, Evans hit two free throws to make it a one point game at half.

The Wildcats (5-1) grabbed their first lead of the game four minutes into the third when James hit a layup to give the home team a 35-34 lead with 6:05 to play in the third. The Aggies then pulled in front 44-43 with 1:27 to go in the quarter before Griffey hit a layup to put the Wildcats up.

But the Aggies got a 3-pointer from Sasha Weber to tie the game up with 1:16 to play. From there, Arizona didn't allow another point. Workman hit a layup with 43 seconds left to put the Wildcats up two and after a turnover by New Mexico State, Washington hit two clutch free throws with nine seconds left to give Arizona its final four point cushion.


Official Basketball Box Score -- Game Totals -- Final Statistics
Pacific vs Arizona
12/05/15 1 p.m. at McKale Center
Pacific 56 • 4-4

#	Player	Total		3-Ptr		Rebounds		PF	TP	A	TO	Blk	Stl	Min
		FG-FGA	FG-FGA	FT-FTA	FT-FTA	Off	Def							
03	CLAYTON, Mauriana	f	2-3	0-0	0-0	3	9	12	2	4	1	2	0	28
12	BUTLER, Erin	f	1-8	1-7	0-0	1	3	4	1	3	1	0	1	28
15	LUAULU-SUMMERS, G.	g	2-9	1-7	2-2	0	2	2	3	7	4	3	0	35
23	EACKLES, Haillie	g	2-8	1-3	2-4	0	2	2	2	7	2	4	0	29
30	QUEENLAND, Najah	g	3-8	1-1	3-4	2	1	3	4	10	1	5	0	23
05	SIMONS, Emily		0-0	0-0	0-0	2	0	2	2	0	0	0	0	10
11	LOPEZ SAGRERA, Eli		0-1	0-0	0-0	1	0	1	0	0	0	0	0	2
13	LIDY, Chelsea		0-1	0-0	0-0	0	0	0	0	0	0	0	0	1
20	COLEMAN, Unique		2-5	0-0	3-4	2	0	2	0	7	0	2	1	17
21	LI, Ameela		0-1	0-0	0-0	0	0	0	0	0	2	0	0	4
22	FINNIE, Desire		7-11	0-0	4-5	0	3	3	3	18	2	1	1	23
Team						3	2	5						
Totals			19-55	4-18	14-19	14	22	36	17	56	11	19	3	200
FG % 1st Half: 10-32 31.3% 2nd half: 9-23 39.1% Game: 19-55 34.5%														
3FG % 1st Half: 2-4 50.0% 2nd half: 2-8 25.0% Game: 4-18 22.2%														
FT % 1st Half: 4-4 100.0 2nd half: 10-15 66.7% Game: 14-19 73.7%														
													Deadball Rebounds 2	

Arizona 69 • 6-1

#	Player	Total		3-Ptr		Rebounds		PF	TP	A	TO	Blk	Stl	Min
		FG-FGA	FG-FGA	FT-FTA	FT-FTA	Off	Def							
00	WORKMAN, Breanna	f	4-8	0-0	0-0	0	5	5	3	8	3	4	0	26
02	COLEMAN, A'Shanti	f	4-9	0-0	1-2	4	3	7	1	9	2	0	4	25
43	GRIFFEY, Taryn	g	1-5	0-2	0-0	0	2	2	1	2	2	1	0	20
15	CANNON, Keyahndra	g	1-3	0-0	4-4	0	2	2	0	6	1	1	0	21
33	BENNETT, JaLea	g	2-5	0-0	0-0	0	1	1	3	4	1	0	0	21
10	EVANS, Lauren		2-4	0-0	0-2	2	4	6	2	4	3	0	0	23
11	HARRIS, Cherice		0-0	0-0	0-0	0	0	0	0	0	1	0	0	1
14	WASHINGTON, Malena		6-10	5-8	4-4	0	1	1	1	21	3	3	0	26
20	BELL, Farrin		2-4	0-0	2-4	0	3	3	1	6	1	2	0	14
21	GRAHAM, Destiny		2-3	0-0	1-2	1	3	4	4	5	1	1	2	13
23	MILLER, Michal		1-3	1-3	1-2	1	0	1	4	4	1	2	0	10
Team						1	1	2						
Totals			25-54	6-13	13-20	9	25	34	20	69	19	14	6	200
FG % 1st Half: 13-27 48.1% 2nd half: 12-27 44.4% Game: 25-54 46.3%														
3FG % 1st Half: 1-4 25.0% 2nd half: 5-9 55.6% Game: 6-13 46.2%														
FT % 1st Half: 3-6 50.0% 2nd half: 10-14 71.4% Game: 13-20 65.0%														
													Deadball Rebounds 5	

Officials: Anita Ortega, Michelle Russi, Kenneth Nash
 Technical fouls: Pacific-None. Arizona-None.
 Attendance: 765

Score by periods					
	1st	2nd	3rd	4th	Total
Pacific	18	8	15	15	56
Arizona	19	11	19	20	69

Points	In	Off	2nd	Fast	Bench
PACIFIC	24	9	13	4	25
ARIZ	29	18	4	13	40

Last FG - PACIFIC 4th-00:48, ARIZ 4th-00:18.
 Largest lead - PACIFIC by 1 1st-09:24, ARIZ by 13 4th-01:05.
 PACIFIC led for 03:08, ARIZ led for 35:45. Game was tied for 01:07.

Score tied - 2 times.
 Lead changed - 10 times.

Official Basketball Box Score -- Game Totals -- Final Statistics
Louisiana Tech vs Arizona
12/10/15 7 p.m. at McKale Center
Louisiana Tech 67 • 4-4

#	Player	Total		3-Ptr		Rebounds		PF	TP	A	TO	Blk	Stl	Min
		FG-FGA	FG-FGA	FT-FTA	FT-FTA	Off	Def							
24	DAVENPORT, Tiara	f	2-7	1-4	0-0	2	5	7	1	5	0	2	0	25
25	WINGATE, Brandi	f	8-12	0-0	10-13	2	2	4	3	26	0	3	0	36
04	ANTHONY, Kierra	g	5-11	1-2	0-1	1	0	1	4	11	2	1	0	27
10	KREID, Maren	g	0-0	0-0	0-0	0	0	0	0	0	0	0	0	0
30	SANTOS, Ashley	g	3-10	1-2	0-2	1	4	5	4	7	0	4	1	31
02	VASQUEZ, Rochelle		1-1	1-1	5-6	1	0	1	2	8	1	2	0	23
03	RICHIE, Ruby		0-0	0-0	0-0	0	0	0	1	0	0	0	0	7
12	PUMROY, Brooke		2-7	0-1	1-2	0	2	2	0	5	2	6	0	30
23	CLEAVER, Reauna		0-1	0-0	2-2	0	1	1	0	2	0	0	0	9
32	MOTEN, Kevione		0-0	0-0	3-4	2	3	5	0	3	0	0	0	12
Team						1	4	5						
Totals			21-49	4-10	21-30	10	21	31	15	67	5	18	1	200
FG % 1st Half: 13-23 56.5% 2nd half: 8-26 30.8% Game: 21-49 42.9%														
3FG % 1st Half: 2-4 50.0% 2nd half: 2-6 33.3% Game: 4-10 40.0%														
FT % 1st Half: 5-9 55.6% 2nd half: 16-21 76.2% Game: 21-30 70.0%														
													Deadball Rebounds 5	

Arizona 77 • 7-1

#	Player	Total		3-Ptr		Rebounds		PF	TP	A	TO	Blk	Stl	Min
		FG-FGA	FG-FGA	FT-FTA	FT-FTA	Off	Def							
00	WORKMAN, Breanna	f	3-7	0-0	1-2	3	0	3	3	7	4	3	0	25
42	COLEMAN, A'Shanti	f	0-0	0-0	0-0	0	1	1	2	0	0	1	0	13
15	CANNON, Keyahndra	g	1-4	0-0	0-0	1	2	3	1	2	3	1	1	18
20	BELL, Farrin	g	4-6	0-0	2-3	0	5	5	2	10	1	2	0	24
33	BENNETT, JaLea	g	6-14	1-1	1-1	1	2	3	3	14	2	4	0	31
10	EVANS, Lauren		3-4	0-0	0-0	1	2	3	2	6	2	1	0	21
14	WASHINGTON, Malena		4-13	1-6	2-2	1	1	2	3	11	4	2	0	23
21	GRAHAM, Destiny		2-2	0-0	0-0	1	1	2	3	4	0	0	0	8
23	MILLER, Michal		3-7	1-4	0-0	0	2	2	3	7	1	0	0	13
31	JAMES, Dejza		8-12	0-1	0-1	6	3	9	1	16	5	1	1	24
Team						3	3	6						
Totals			34-69	3-12	6-9	17	22	39	23	77	22	16	2	200
FG % 1st Half: 18-33 54.5% 2nd half: 16-36 44.4% Game: 34-69 49.3%														
3FG % 1st Half: 2-7 28.6% 2nd half: 1-5 20.0% Game: 3-12 25.0%														
FT % 1st Half: 1-1 100.0 2nd half: 5-8 62.5% Game: 6-9 66.7%														
													Deadball Rebounds 0	

Officials: Penny Davis, Cameron Inouye, Brian Woods
 Technical fouls: Louisiana Tech-None. Arizona-None.
 Attendance: 827

Score by periods					
	1st	2nd	3rd	4th	Total
Louisiana Tech	17	16	15	19	67
Arizona	24	15	19	19	77

Points	In	Off	2nd	Fast	Bench
LATECH	20	19	12	8	18
ARIZ	48	15	22	10	44

Last FG - LATECH 4th-02:27, ARIZ 4th-02:11.
 Largest lead - LATECH by 2 1st-09:32, ARIZ by 13 3rd-06:13.
 LATECH led for 00:22, ARIZ led for 37:04. Game was tied for 02:34.

Score tied - 3 times.
 Lead changed - 1 time.

Recap of Pacific

TUCSON, Ariz. –Malena Washington poured in a career high 21 points and freshman A'Shanti Coleman added nine points, seven rebounds and four blocks as the Arizona Wildcats beat Pacific 69-56 Saturday afternoon at McKale Center.

The Wildcats moved to 6-1 on the season and 4-0 at home with the victory. Coach Niya Butts' team shot 48 percent from the field and hit six of 13 from 3-point range after entering the game as the top long distance shooting team in the country. Arizona held Pacific to just 22 percent shooting from deep and 35 percent from the floor.

"I was really proud of our defensive effort," Butts said. "I am just really proud of this group. We share the ball really well. We had 19 assists on 25 made field goals, which is something that can certainly be called teamwork. We shot the ball from the field really well. I am proud of this group. We are going into some days off here, much needed rest. This is day six in a row for us so we will get that rest and then we are on to the next. We will get ready for our next game which is Louisiana Tech."

The Wildcats led 30-26 at the half in a back-and-forth 20 minutes. The first quarter saw 10 lead changes and eventually ended with Arizona leading 19-18.

Early in the second quarter, both teams continued to match each other. The teams traded buckets to start the quarter with Taryn Griffey connecting on a layup for the Wildcats. Leading 21-20, Coleman hit a basket to put the Wildcats up three. After an answer from the Tigers, Keyahndra Cannon hit a layup to put the Wildcats back up three.

The Wildcats hit 11 of their first 18 shots to start, which spanned into the second quarter. Arizona extended its lead to six after a



Official Basketball Box Score - Game Totals - Final Statistics

SMU vs Arizona

DEC. 19 2:15 PM at COLISEO RUBEN ZAYAS MONTANEZ

SMU 58 • 3-5

#	Player	Total			3-Ptr		Rebounds			PF	TP	A	TO	Blk	Stl	Min
		FG	FGA	FT	FTA	Off	Def	Tot								
02	ADAMS, McKenzie	*	6-14	1-3	5-7	0	4	4	3	18	1	1	1	0	32	
10	FROLING, Alicia	*	2-8	0-2	4-7	3	6	9	4	8	3	3	1	0	29	
12	BOLTON, Morgan	*	3-9	2-6	3-5	0	1	1	4	11	3	1	0	1	28	
15	COLLINS, Stephanie	*	5-11	0-0	0-4	5	7	12	2	10	2	2	2	1	36	
33	GIBSON, Ashley	*	3-9	1-5	2-2	2	3	5	3	9	3	2	0	4	31	
03	WILKINS, Gabrielle		0-3	0-0	0-0	2	0	2	1	0	1	0	1	1	15	
04	REESE, Mikayla		0-1	0-0	0-0	0	0	0	0	0	0	1	0	0	2	
20	THOMAS, Dai'ja		1-2	0-0	0-0	1	2	3	1	2	0	1	1	0	15	
24	MICKENS, Kamray		0-2	0-0	0-0	0	3	3	0	0	0	1	0	0	12	
Team						5	0	5				1				
Totals			20-59	4-16	14-25	18	26	44	18	58	13	13	6	7	200	
FG % 1st Half: 11-33 33.3%		2nd half: 9-26 34.6%	Game: 20-59 33.9%		Deadball Rebounds 3											
3FG % 1st Half: 2-12 16.7%		2nd half: 2-4 50.0%	Game: 4-16 25.0%													
FT % 1st Half: 3-9 33.3%		2nd half: 11-16 68.8%	Game: 14-25 56.0%													

Arizona 46 • 7-1

#	Player	*	Total			3-Ptr			Rebounds			PF	TP	A	TO	Blk	Stl	Min
			FG	FGA		FG	FGA		Off	Def	Tot							
00	WORKMAN, Breanna	*	1-1	0-0		2-2	0	2	2	4	4	0	2	0	0	14		
03	GRIFFEY, Taryn	*	6-11	2-5		2-3	2	4	6	2	16	1	4	1	2	28		
15	CANNON, Keyahndra	*	1-4	0-1		0-0	2	3	5	3	2	0	1	1	0	23		
33	BENNETT, JaLea	*	0-2	0-1		1-2	0	1	1	4	1	0	1	1	0	14		
42	COLEMAN, A'Shanti	*	1-4	0-0		0-0	1	0	1	1	2	1	1	0	1	9		
10	EVANS, Lauren		0-2	0-0		2-2	1	4	5	1	2	1	0	1	0	20		
14	WASHINGTON, Malena		1-7	1-2		0-2	0	0	0	2	3	3	0	0	1	23		
20	BELL, Farrin		1-4	0-1		0-0	0	1	1	1	2	1	0	0	1	12		
21	GRAHAM, Destiny		0-1	0-0		0-0	1	0	1	3	0	0	1	1	0	5		
23	MILLER, Michal		1-3	1-3		0-0	1	1	2	0	3	0	0	0	0	6		
24	JONES, LaBrittney		1-6	0-0		5-6	2	5	7	3	7	1	5	2	0	23		
31	JAMES, Dejza		2-7	0-0		0-0	2	4	6	4	4	1	3	1	0	23		
Team							2	3	5									
Totals				15-52		4-13	12-17	14	28	42	28	46	9	18	8	5	200	
FG % 1st Half: 8-30			26.7%	2nd half: 7-22			31.8%	Game: 15-52			28.8%	Deadball Rebounds 3						
3FG % 1st Half: 3-9			33.3%	2nd half: 1-4			25.0%	Game: 4-13			30.8%							
FT % 1st Half: 5-7			71.4%	2nd half: 7-10			70.0%	Game: 12-17			70.6%							

Officials: Jesed Diaz/
Technical fouls: SMU-None, Arizona-None.
Attendance:

Score by periods	1st	2nd	3rd	4th	Total
SMU	13	14	10	21	58
Arizona	13	11	16	6	46

Last FG - SMU 4th-03:26, ARIZ 4th-01:38.
Largest lead - SMU by 12 4th-00:38, ARIZ by 5 3rd-01:09.

Points	In	Off	2nd	Fast	Bench
SMU	22	21	15	0	2
ARIZ	16	15	14	0	21

Score tied - 7 times.
Lead changed - 11 times.

Official Basketball Box Score - Game Totals - Final Statistics

Arizona vs Florida Gulf Coast Eagles

DEC. 20 12:00 PM at COLISEO RUBEN ZAYAS MONTANEZ

Arizona 55 • 7-2

#	Player	Total			3-Ptr		Rebounds			PF	TP	A	TO	Blk	Stl	Min
		FG	FGA	FT	FTA	Off	Def	Tot								
00	WORKMAN, Breanna	* 1-3	0-0	4-6	1	5	6	2	6	1	5	0	0	27		
03	GRIFFEY, Taryn	* 0-1	0-1	0-0	0	1	1	2	0	1	1	0	0	12		
15	CANNON, Keyahndra	* 5-10	0-1	0-0	0	1	1	4	10	1	2	0	3	26		
33	BENNETT, JaLea	* 2-4	0-0	0-0	2	2	4	0	4	1	1	1	0	21		
42	COLEMAN, A'Shanti	* 5-5	0-0	0-0	0	2	2	2	10	1	4	0	0	18		
10	EVANS, Lauren	0-1	0-0	0-0	1	4	5	3	0	3	1	0	0	22		
14	WASHINGTON, Malena	3-8	0-3	5-5	0	2	2	1	11	4	1	0	1	27		
20	BELL, Farrin	0-0	0-0	0-0	0	1	1	0	0	0	2	0	0	8		
21	GRAHAM, Destiny	2-3	0-0	0-0	1	2	3	2	4	1	2	1	1	10		
23	MILLER, Michal	1-4	1-2	0-0	1	1	2	0	3	1	0	0	0	6		
24	JONES, LaBrittney	3-7	0-1	1-2	3	2	5	1	7	0	0	3	0	15		
31	JAMES, Dejza	0-1	0-0	0-0	0	2	2	1	0	0	2	0	1	8		
Team					4	5	9									
Totals		22-47	1-8	10-13	13	30	43	18	55	14	21	5	6	200		
FG % 1st Half: 12-26 46.2%		2nd half: 10-21 47.6%	Game: 22-47 46.8%		Deadball Rebounds											
3FG % 1st Half: 1-8 12.5%		2nd half: 0-0 0.0%	Game: 1-8 12.5%													
FT % 1st Half: 5-7 71.4%		2nd half: 5-6 83.3%	Game: 10-13 76.9%													
2																

Florida Gulf Coast Eagles 57 • 7-3

#	Player	Total		3-Ptr		Rebounds			PF	TP	A	TO	Blk	Stl	Min
		FG	FGA	FG	FGA	FT	FTA	Off							
00	DUNSON, DyTiesha	*	2-3	0-0	0-0	1	1	2	3	4	6	0	0	2	34
02	ATWATER, Kaneisha	*	5-16	0-1	4-5	4	0	4	3	14	3	2	0	5	35
20	LAUGHTER, Haley	*	3-8	1-6	1-2	0	4	4	1	8	0	1	1	2	27
21	GLUESING, Jaime	*	0-3	0-1	2-2	0	3	3	0	2	2	1	1	0	22
24	GRADINJAN, Taylor	*	4-12	3-9	1-2	2	2	4	3	12	0	2	0	0	29
03	MEADOR, Katie		0-1	0-1	0-0	0	0	0	0	0	0	0	0	0	2
12	HAAS, Stephanie		5-7	0-1	1-3	0	1	1	1	11	0	1	1	2	25
14	KNIGHT, Whitney		2-6	2-3	0-0	0	2	2	2	6	1	1	1	0	18
25	MCCASKILL, Sydney		0-2	0-2	0-0	0	0	0	0	0	1	1	0	1	8
Team						2	1	3							
Totals			21-58	6-24	9-14	9	14	23	13	57	13	9	4	12	200
FG % 1st Half: 13-28 46.4%		2nd half: 8-30 26.7%	Game: 21-58 36.2%		Deadball Rebounds 2										
3FG % 1st Half: 3-12 25.0%		2nd half: 3-12 25.0%	Game: 6-24 25.0%												
FT % 1st Half: 4-7 57.1%		2nd half: 5-7 71.4%	Game: 9-14 64.3%												

Officials: Brian Gardland/ Greg Norton/ Axel Coll
Technical fouls: Arizona-None, Florida Gulf Coast Eagles-None.
Attendance:

Score by periods	1st	2nd	3rd	4th	Total
Arizona	16	14	16	9	55
Florida Gulf Coast Eagles	19	14	8	16	57

Last FG - ARIZ 4th-00:51, FGCU 4th-02:07.
Largest lead - ARIZ by 6 4th-07:27, FGCU by 6 2nd-05:58.

Points	In	Off	2nd	Fast	Bench
ARIZ	28	5	4	0	25
FGCU	30	20	11	0	17

Score tied - 7 times.
Lead changed - 5 times.

Recap of SMU

TRUJILLO ALTO, Puerto Rico - The Arizona Wildcats had their five-game winning streak snapped Saturday afternoon, falling to SMU 58-46 at the Ruben Zayas Montanez Coliseum. The game was Arizona's first in the Puerto Rico Classic.

Taryn Griffey, who missed Arizona's previous game with a minor injury, led the Cats with 16 points, six rebounds and a pair of steals in 28 minutes. LaBrittney Jones, making her season debut, had seven points, seven rebounds and two blocks in 23 minutes.

"You have to do a good job of getting stops and rebounding, and we didn't do that tonight," coach Niya Butts said after the setback. "We had an opportunity to break the game open in the third, and we had a turnover and then gave up an offensive rebound back-to-back, and couldn't get it done." The first half was a back-and-forth affair that saw four ties and five lead changes between the two teams. After being knotted at 13 after the opening quarter, SMU opened up a three-point lead at halftime. Both teams struggled from the floor in the first with SMU shooting 33 percent and Arizona at a 28 percent clip.

Griffey led the way for the Wildcats in the first, scoring seven points and grabbing four rebounds in 13 minutes. Griffey opened the game with an and-one on a layup to give the Wildcats a 3-0 lead. She hit a 3-pointer later in the quarter as well.

In the third quarter, the Wildcats (7-2) scored the first six points of the frame to take a three-point lead at 30-27. A pair of Griffey jumpers sandwiched two free throws from Breanna Workman. After SMU (4-5) scored six straight points, Arizona went on a 10-2 run to grab a 40-35 lead. Griffey had five points during that stretch and Jones added three on free throws.

Right before the end of the quarter, SMU's Ashley Gibson hit two free throws to cut it to a three-point game at the end of the quarter.

The Wildcats led by as many as five in the fourth, but SMU closed the game on a 15-2 run over the last seven-plus minutes.

Recap of Florida Gulf Coast

TRUJILLO ALTO, Puerto Rico Despite 11 points from Malena Washington and 10 apiece from A'Shanti Coleman and Keyahndra Cannon, the Arizona Wildcats fell to Florida Gulf Coast 57-55 Saturday in their second game at the Puerto Rico Classic.

The Eagles, an NCAA Tournament team from a year ago that lost to No. 9 Mississippi State by five on Friday, used a late surge to top the Wildcats.

Leading midway through the fourth quarter, LaBrittney Jones, playing in her second game back from a foot injury, canned a jump shot to give the Wildcats a 49-44 lead with 5:48 to play. The Eagles responded with a layup to cut it to three, but Coleman hit a bucket to stretch it back to five with 4:35 to play. Over the next two-plus minutes, Florida Gulf Coast went on a 10-0 run to turn a 51-46 deficit into a 56-51 lead. The Cats (7-3) cut it to one with 51 seconds left thanks to back-to-back baskets from Washington and Jones. But the Eagles (8-3) made one free throw and held on defensively to secure the victory.

The Wildcats outrebounded the Eagles 43-23, but coach Niya Butts said the team struggled to collect some critical boards late in the game.

"We didn't rebound in the clutch when we had to," Butts said. "If we rebound, the game is over. We shot the ball well, we just turned the ball over and wasted some possessions. When that happens, it's tough to beat a good team." The Wildcats were led in the first half by their starting post players, Coleman and Breanna Workman. Coleman, a true freshman, was 4 of 4 from the floor in the game's first 20 minutes and had eight points in 13 minutes. Workman, a junior, had six points and four rebounds in 12 minutes. She was 4 of 6 from the free throw line.

Arizona shot 46 percent from the floor in the first, but struggled from 3-point range, hitting just one of eight. Florida Gulf Coast led for the majority of the first half, with Arizona being out in front for just 31 seconds. But the Wildcats had a strong push at the end of the half to get within striking distance.

Trailing 27-21 with 4:30 to play in the second quarter, Workman scored four straight points to cut it to a two-point deficit with 3:46 left.



Official Basketball Box Score -- Game Totals -- Final Statistics

Arizona vs GARDNE~1

DEC. 21 4:30 PM at COLISEO RUBEN ZAYAS MONTANEZ

Arizona 79 • 7-3

#	Player	Total		3-Ptr		Rebounds			PF	TP	A	TO	Blk	Stl	Min
		FG	FGA	FG	FGA	Off	Def	Tot							
03	GRIFFEY, Taryn	*	11-20	7-11	0-0	1	3	4	2	29	1	1	0	0	26
15	CANNON, Keyahndra	*	3-8	0-1	2-2	0	2	2	3	8	0	2	0	3	29
31	JAMES, Deja	*	0-2	0-0	1-2	2	3	5	3	1	1	3	0	0	16
33	BENNETT, JaLea	*	1-2	0-0	0-0	1	2	3	0	2	0	0	1	0	6
42	COLEMAN, A'Shanti	*	2-5	0-0	0-0	3	1	4	2	4	0	2	1	1	15
10	EVANS, Lauren		1-3	0-0	1-2	0	1	1	2	3	1	0	0	2	17
14	WASHINGTON, Malena		4-7	1-4	0-0	1	1	2	2	9	5	4	0	1	22
20	BELL, Farrin		0-2	0-0	0-0	0	1	1	2	0	1	1	0	0	12
21	GRAHAM, Destiny		1-3	0-0	0-0	4	1	5	2	2	2	0	0	2	20
23	MILLER, Michal		3-4	0-0	1-1	0	3	3	0	7	2	2	0	0	12
24	JONES, LaBrittney		5-10	0-0	4-6	1	1	2	2	14	2	2	1	3	25
Team						6	6	12							
Totals			31-66	8-16	9-13	19	25	44	20	79	15	17	3	12	200
FG % 1st Half: 13-33 39.4%		2nd half: 18-33 54.5%	Game: 31-66 47.0%		3FG % 1st Half: 3-9 33.3%		2nd half: 5-7 71.4%	Game: 8-16 50.0%		FT % 1st Half: 2-2 100.0%		2nd half: 7-11 63.6%	Game: 9-13 69.2%		Deadball Rebounds 3

GARDNE~1 60 • 6-4

#	Player	Total		3-Ptr		Rebounds			PF	TP	A	TO	Blk	Stl	Min
		FG	FGA	FG	FGA	Off	Def	Tot							
03	HUNTSMAN, Tierra	* 1-6	1-4	7-10	1 2 3	1	10	1	4	0	4	30			
11	PARKER, Olivia	* 4-6	1-2	3-4	2 1 3	2	12	0	3	5	1	37			
22	BROWN, Candace	* 4-14	0-2	5-7	0 2 2	1	13	1	3	0	1	31			
23	HILL, Alexus	* 5-9	0-1	4-6	1 5 6	4	14	0	2	1	2	34			
42	QUINN, Alicia	* 1-2	0-0	0-0	0 2 2	0	2	1	0	0	0	9			
00	JENKINS, Charlisha	0-0	0-0	0-0	0 0 0	0	0	0	0	0	0	3			
02	CURRIE, Kiera	0-1	0-1	1-2	0 0 0	1	1	0	0	0	1	12			
05	WILLIAMS, Aunesha	2-4	0-0	0-0	2 1 3	0	4	0	4	0	2	18			
12	ADEBAYO, Evelyn	0-1	0-0	0-0	0 0 0	1	0	0	0	0	0	5			
15	LOCKLEAR, Lovely	1-1	0-0	0-0	0 1 1	1	2	0	2	0	0	7			
20	STANFORD, Ky'Asia	1-4	0-0	0-0	1 0 1	0	2	0	1	0	0	10			
24	ACKERMANN, Morgan	0-0	0-0	0-0	0 0 0	0	0	0	1	0	0	2			
33	REID, Mariah	0-0	0-0	0-0	0 0 0	0	0	0	0	0	0	2			
	Team				1 2 3										
Totals		19-48	2-10	20-29	8 16 24	11	60	3	20	6	11	200			
FG % 1st Half: 9-24 37.5%		2nd half: 10-24 41.7%	Game: 19-48 39.6%		3FG % 1st Half: 4-8 50.0%		2nd half: 16-21 76.2%	Game: 20-29 69.0%		FT % 1st Half: 4-8 50.0%		2nd half: 16-21 76.2%	Game: 20-29 69.0%		Deadball Rebounds 6

Officials: Greg Norton/ Angel Stanton/ Carlos Villanueva

Technical fouls: Arizona-None. GARDNE~1-None.

Attendance:

Score by periods	1st	2nd	3rd	4th	Total
Arizona	16	15	18	30	79
GARDNE~1	14	10	18	18	60

Last FG - ARIZ 4th-00:55, GARDNE~1 4th-00:28.

Largest lead - ARIZ by 21 4th-00:55, GARDNE~1 by 6 1st-04:57.

Points	In	Off	2nd	Fast	Bench
ARIZ	26	22	19	6	35
GARDNE	20	11	5	2	9

Score tied - 4 times.

Lead changed - 3 times.

Official Basketball Box Score -- Game Totals -- Final Statistics

George Mason vs Arizona
12/29/15 2 p.m. at McKale Center

George Mason 60 • 5-8

#	Player	Total			3-Ptr		Rebounds			PF	TP	A	TO	Blk	Stl	Min									
		FG	FGA	FT	FTA	Off	Def	Tot																	
24	PADGETT, Tiffany	f	3-10	0-2	1-2	2	6	8	2	7	2	3	0	4	31										
32	DODSON, Tayler	f	0-3	0-0	0-0	5	0	5	2	0	0	0	0	1	26										
13	O'DONNELL, Bridget	c	1-2	0-0	0-0	1	0	1	1	2	0	1	0	1	11										
12	WRIGHT, Kara	g	4-11	0-3	0-0	0	4	4	8	3	4	0	1	1	38										
31	BROWN, Taylor	g	7-20	2-5	3-4	0	1	1	2	19	4	4	0	1	41										
04	WILLIAMS, Desare		0-0	0-0	0-0	0	0	0	0	0	0	0	0	0	1										
05	MOHAMED, Reana		0-1	0-1	0-0	1	1	2	0	0	1	1	0	0	5										
10	TRIGGS, Jewel		0-0	0-0	1-4	0	0	0	0	1	0	1	1	0	15										
11	HUTZELL, Katrina		0-0	0-0	0-0	0	0	0	0	0	0	0	0	0	1										
20	BELL, Chinyere		3-6	0-0	3-4	3	6	9	2	9	1	2	1	0	31										
33	MOKUBE, Kristi		6-12	0-0	2-3	1	7	8	4	14	0	3	2	0	25										
Team						4	5	9				1													
Totals			24-65	2-11	10-17	17	30	47	17	60	11	20	4	8	225										
FG % 1st Half: 11-29 37.9%		2nd half: 10-29 34.5%		OT: 3-7 42.9%		Game: 24-65 36.9%		3FG % 1st Half: 2-8 25.0%		2nd half: 0-2 0.0%		OT: 0-1 0.0%		Game: 2-11 18.2%		FT % 1st Half: 6-7 85.7%		2nd half: 3-9 33.3%		OT: 1-1 100.0%		Game: 10-17 58.8%		Deadball Rebounds 4	

Arizona 68 • 9-3

#	Player		Total		3-Ptr		Rebounds			PF	TP	A	TO	Blk	Stl	Min
			FG	FGA	FG	FGA	FT	FTA	Off							
21	GRAHAM, Destiny	f	4-6	0-0	6-6	2	2	4	3	14	2	1	0	0	31	
24	JONES, LaBritney	f	4-8	0-0	8-11	2	3	5	2	16	1	1	3	2	27	
03	GRIFFEY, Taryn	g	3-9	2-6	1-2	2	3	5	1	9	1	4	0	3	24	
15	CANNON, Keyahndra	g	0-3	0-1	0-0	1	3	4	1	0	3	1	0	3	29	
33	BENNETT, JaLea	g	3-9	0-2	1-2	0	0	0	2	7	3	1	0	1	18	
10	EVANS, Lauren		5-7	0-1	0-0	3	3	6	1	10	2	1	3	1	27	
14	WASHINGTON, Malena		4-10	3-6	1-2	1	3	4	3	12	1	2	0	0	24	
20	BELL, Farrin		0-1	0-0	0-0	0	1	1	1	0	0	0	0	1	8	
23	MILLER, Michal		0-5	0-2	0-0	0	1	1	2	0	1	0	1	1	6	
31	JAMES, Deja		0-4	0-0	0-0	3	4	7	0	0	3	2	1	1	13	
42	COLEMAN, A'Shanti		0-6	0-0	0-0	3	0	3	1	0	3	2	1	1	18	
Team						2	3	5								
Totals			23-68	5-18	17-23	19	26	45	17	68	17	17	9	14	225	
FG % 1st Half: 12-29 41.4% 2nd half: 7-33 21.2% OT: 4-6 66.7% Game: 23-68 33.8% Deadball Rebounds 2,1																
3FG % 1st Half: 2-6 33.3% 2nd half: 2-11 18.2% OT: 1-1 100.0% Game: 5-18 27.8%																
FT % 1st Half: 8-11 72.7% 2nd half: 3-4 75.0% OT: 6-8 75.0% Game: 17-23 73.9%																

Officials: Melissa Barlow, Karen Lasulik, Benito Luna

Technical fouls: George Mason-None. Arizona-None.

Attendance: 990

Score by periods	1st	2nd	3rd	4th	OT	Total
George Mason	16	14	7	16	7	60
Arizona	19	15	13	6	15	68

Last FG - MASON OT-01:42, ARIZ OT-00:40.

Largest lead - MASON None, ARIZ by 10 3rd-00:01.

Score tied - 3 times.

Lead changed - 0 times.

Recap of Gardner-Webb

TRUJILLO ALTO, Puerto Rico -- Taryn Griffey tied a school record with seven 3-pointers and finished with a career-high 29 points to lift the Arizona Wildcats to a 79-60 win over Gardner-Webb in the final game of the Puerto Rico Classic. Griffey finished 11 of 20 from the floor, 7 of 11 from 3-point range and added four rebounds in 26 minutes. The redshirt freshman guard helped the Wildcats (8-3) outscore the Bulldogs 30-18 in the fourth quarter by hitting four of her 3-pointers. She had 15 in the second half total.

"I was just really into helping my team out anyway I could tonight," Griffey said after the win. "I wasn't really thinking about making or missing, I was just thinking, 'OK, we need to make our lead bigger. That's all that was on my mind.'" After leading by seven at halftime, maintained that lead into the fourth quarter with each team scoring 18 apiece in the third. But in the fourth, Griffey and the Wildcats pulled away. Leading 57-49 with 5:31 remaining, Griffey hit her first 3-pointer of the fourth to give the Wildcats their double digit lead of the game at 60-49.

Later in the quarter, leading by 10, Griffey hit another from long distance to make it 66-53 with less than four minutes to play. She followed that up with another bucket to make it 69-53. Her final long ball came 1:10 left to make it 77-58. Griffey's performance came in the final game of three contests in three days. The guard missed all of last season with a torn ACL. Her seven 3-pointers put her in a seven-way tie for most 3-pointers in a game in school history. Kama Griffitts did it most recently, when she had seven against UNLV in 2012. Erin Butler, Dee-Dee Wheeler and Lisa Griffith (three times) all also hit seven in a game.

"She was really hot; shot the ball incredibly well from the field," coach Niya Butts said. "When you can shoot the ball, you can shoot it. And when you're feeling it, you're feeling it. Tonight, for her, was one of those days."

Griffey wasn't the only Wildcat to have a strong performance in the finale in Puerto Rico. Junior forward LaBrittney Jones, playing in her third game of the season after sustaining a foot injury, finished with 14 points and three steals in 25 minutes. Fellow junior Malena Washington had nine points and five assists off the bench for the Wildcats.

Recap of George Mason

TUCSON, Ariz. -- The Arizona Wildcats came alive in overtime to race by George Mason 68-60 Tuesday afternoon at McKale Center to improve to 6-0 on their home court this season.

The Cats outscored the Patriots 15-7 in the extra session to earn the win in front of 990 fans. Freshman Destiny Graham, who made her first career start in the game, had six of the team's 15 points in overtime, knocking down two free throws and hitting one bucket. The freshman from San Francisco finished with a career-high 14 points and four rebounds in a career best 31 minutes. LaBrittney Jones led all Wildcats with 16 points and also added five points and three blocks. "It was a great overtime period for us," Coach Niya Butts said. "Destiny Graham, in her first career start, I don't think you could ask for a better stat line. She made clutch free throws there at the end of the game that we needed. She rebounded the ball well and only had one turnover. We were pretty pleased with her production overall."

The Wildcats (9-3) led by 10 points at the end of the third quarter, but saw the visiting Patriots put together a strong fourth quarter. The Patriots went on a 9-0 run over the first five minutes of the quarter and cut it to 47-46 when Kristi Mokube hit a jump shot with 4:41 to play. Jones answered back with a pair of free throws to extend the lead to three with 3:45 to play. The Patriots eventually tied the game up at 51 with 2:32 to play just to see Jones hit a jump shot off a pass from Lauren Evans to put the Cats up two with 2:05 left. Again, George Mason answered and tied the game when Chinyere Bell hit a shot with 1:21 left. Neither team could score over the final 81 seconds, which sent the game to overtime.

In the team's first overtime game of the season, the Wildcats started fast. Graham opened the scoring with a jumper and Malena Washington extended the lead to four with a layup with 3:35 left in the extra period.

After the Patriots (5-8) cut it to two, Washington hit a 3-pointer to make it 60-55 with 2:54 left on the clock. George Mason cut the lead to 64-60 with 1:42 left, but the Wildcats scored the final four points of the game off a Jones bucket and one free throw apiece from Washington and Taryn Griffey.



LEADS, DEFICITS, RUNS

Opponent	Largest Lead	Largest Deficit	Final Margin	Lead Changes
at Toledo	8	6	+3	6
Howard	40	0	+37	1
at San Diego	0	10	-5	0
Kansas	20	6	+15	9
at North Texas	8	11	+7	1
New Mexico State	4	16	+4	5
Pacific	13	1	+13	10
Louisiana Tech	13	2	+10	1
SMU	5	12	-12	11
Florida Gulf Coast	6	6	-2	5
Gardner-Webb	21	6	+19	3
George Mason	10	0	+8	0
Stanford				
California				
at Washington				
at Washington				
Utah				
Colorado				
Arizona State				
at Arizona State				
at Oregon State				
at Oregon				
USC				
UCLA				
at California				
at Stanford				
Washington				
Washington State				
at UCLA				
at USC				

() denotes number of ties

LBJ or Batman?

While in San Francisco for Pac-12 Media Day, junior forward LaBrittney Jones was asked about her nick name in high school, which was "Batman." Since she's arrived at Arizona, however, Jones has simply gone by "LBJ." By whichever name you prefer, Jones will be a major factor for the Wildcats this season. The Cedar Hill, Texas native poured in a career best 30 points against Oregon last season. Jones scored in double figures in 11 of her last 25 games. The junior has been hobbled by a foot injury and has yet to play this season.

"Gloyd" to Still Have You Around

Alli Gloyd, who started all 30 games last season and averaged 5.1 points per game and 5.3 rebounds a contest, has joined the coaching staff with her playing eligibility exhausted. Gloyd will serve as the Assistant Director of Operations, replacing Nick Incrocci.

Cats Learning Etiquette

For the third straight season, Arizona took part in an etiquette dinner at a local Tucson banquet space. At the dinner, players, coaches, and staff were instructed proper etiquette and social standard when dining at fine restaurants.

ARIZONA'S WIN-LOSS MARGIN

	1	2	3	4	5	6	7	8	9	10	11	12	13	14	15	16	17	18	19	20-25	26-30	31+
Wins (9)			1	1			1	1		1			1		1				1			1
Losses (3)		1			1							1										





GENERAL INFORMATION

Location:	Tucson, Ariz.
Founded:	1855
Enrollment:	40,200
Nickname:	Wildcats
Colors:	Cardinal and Navy
Affiliation:	NCAA Division I
Conference:	Pac-12 Conference
Arena (Capacity):	McKale Center (14,655)
President:	Dr. Ann Weaver Heart
Athletics Director:	Greg Byrne
NCAA Faculty Representative:	Jory Hancock
Director of Athletics Phone:	(520) 621-4622
Ticket Office Phone:	(520) 621-2287
Web Site:	ArizonaWildcats.com

HISTORY

First Basketball Game:	Feb. 2, 1972 vs. New Mexico (W, 73-36)
All-Time Record:	536 -642 (.455)
All-Time Attendance Record:	6,268 vs. UCSB on 11/25/14
Postseason Appearances:	2011, WNIT 1st Round
NCAA Appearances:	7 ('97, '98, '99, '00, '03, '04, '05)
WNIT Appearances:	4 ('96, 01, '11)
Last Postseason Appearance:	2011, WNIT 1st Round
Last Postseason Opponent:	Utah State (3/17/11)
Last Postseason Result	L, 103-96
All-Time Postseason Record:	10-9
All-Time NCAA Tournament Record	6-7
All-Time WNIT Record:	4-2
Last NCAA Tournament Appearance:	2005, 2nd round
Last NCAA Tournament Opponent:	LSU (3/22/2005)
Last NCAA Tournament Result:	L, 76-43

ARIZONA INACTIVES



2015-16 PAC-12 STANDINGS

	Conference		Overall	
	W	L	W	L
RV/RV USC	0	0	11	0
RV/RV Oregon	0	0	10	0
#9/11 Oregon State	0	0	9	1
Washington State	0	0	9	2
/RV Washington	0	0	9	2
#11/12 Stanford	0	0	9	2
#18/21 California	0	0	8	2
Arizona	0	0	8	3
#21/22 Arizona State	0	0	8	3
#19/RV UCLA	0	0	7	3
Utah	0	0	7	3
Colorado	0	0	5	6

2015-16 PAC-12 PRESEASON COACHES' POLL

1. Oregon State (11) 121
2. Stanford 104
3. Arizona State (1) 102
- T4. UCLA 88
- T4. California 88
6. Washington 68
7. USC 60
8. Oregon 52
9. Colorado 39
10. Washington State 30
11. Utah 23

12. Arizona 17

2015-16 PAC-12 PRESEASON MEDIA POLL

1. Oregon State (23) 287
2. Arizona State (1) 247
3. Stanford 245
4. California 205
5. UCLA 203
6. Washington 167
7. USC 140
8. Oregon 118
9. Colorado 88
10. Washington State 75
11. Utah 61

12. Arizona 36

2015-16 PRESEASON ALL-PAC-12 TEAM

Jillian Alleyne, Oregon, F, Sr.
 Sophie Brunner, Arizona State, Jr.
 Nirra Fields, UCLA, Sr.
 Ruth Hamblin, Oregon State, Sr.
 Kelsey Plum, Washington, Jr.
 Sydney Wiese, Oregon State, Jr.

2015-16 PAC-12 WEEKLY AWARDS

PLAYER OF THE WEEK

Date Player Team Year
 Nov. 16 Courtney Range Cal Jr.
 Nov. 23 Jordin Canada UCLA So.
 Nov. 30 Lili Thompson Stanford Jr.
 Dec. 7 Jillian Alleyne Oregon Sr.
 Dec. 14 Emily Potter Utah So.
 Dec. 21 Lili Thompson Stanford Jr.
 Dec. 28 Arnecia Hawkins Arizona St Sr.

FRESHMAN OF THE WEEK

Date Player Team Year
 Nov. 16 Kristine Anigwe Cal Fr.
 Nov. 23 Borislava Hristova Wazzu Fr.
 Nov. 30 Kristine Anigwe Cal Fr.
 Dec. 7 Kristine Anigwe Cal Fr.
 Dec. 14 Kristine Anigwe Cal Fr.
 Dec. 21 Maite Cazorla Oregon Fr.
 Dec. 28 Kristine Anigwe Cal Fr.



2015-16 MISCELLANEOUS STATS

Opponent	Points in the Paint	Margin	Turnovers	Points Off Turnovers	Margin	Offensive Rebounds	Second Chance Points	Margin	Bench Points	Margin	Final Score	Margin
N14 at Toledo	18-26	-8	16-15	15-15	even	14-12	5-13	-8	27-26	+1	62-59	+3
N18 vs. Howard	20-8	+12	19-30	28-9	+19	13-11	17-6	+11	26-6	+20	65-28	+37
N21 at San Diego	8-10	-2	16-15	14-10	-4	12-12	2-15	-13	29-9	+20	54-59	-5
N23 Kansas	30-24	+6	14-17	17-12	+5	15-13	12-9	+3	31-11	+20	67-52	+15
N30 at North Texas	18-12	+6	24-26	24-17	+7	5-12	0-9	-9	16-3	+13	51-44	+7
D2 vs. New Mexico St.	36-24	+12	22-22	23-15	+8	11-5	16-2	+14	32-13	+19	68-64	+4
D5 vs. Pacific	29-24	+5	14-19	18-9	+9	9-14	4-13	-9	40-25	+15	69-56	+13
D10 vs. La. Tech	48-20	+28	16-18	15-19	-4	17-10	22-12	+10	44-18	+26	77-67	+10
D19 vs. SMU	16-22	-6	18-13	15-21	-6	14-18	14-15	-1	21-2	+19	46-58	-12
D20 vs. Florida Gulf Coast	28-30	-2	21-9	5-20	-15	13-9	4-11	-7	25-17	+8	55-57	-2
D21 vs. Gardner-Webb	26-20	+6	17-20	22-11	+11	19-8	19-5	+14	35-9	+26	79-60	+19
D29 vs. George Mason	18-28	-10	17-20	16-16	even	19-17	13-16	-3	22-24	-2	68-60	+8
OVERALL	295-248	+47	175-172	212-174	+38	125-123	128-126	+2	348-163	+185	761-664	+97

Stats listed in order of Arizona-Opponents

WILDCATS BY STARTING LINEUP in 2015-16

Guard	Guard	Guard	Forward	Center	Times	Record
Taryn Griffey	Keyahndra Cannon	JaLea Bennett	A'Shanti Coleman	Breanna Workman	9	6-3
Farrin Bell	Keyahndra Cannon	JaLea Bennett	A'Shanti Coleman	Breanna Workman	1	1-0
Taryn Griffey	Keyahndra Cannon	JaLea Bennett	A'Shanti Coleman	Dejza James	1	1-0
Taryn Griffey	Keyahndra Cannon	JaLea Bennett	Destiny Graham	LaBrittney Jones	1	1-0

STATISTICAL GAMES (15-16)

DOUBLE-DIGIT SCORING

Player	Games	Keyahndra Cannon
Malena Washington	8	A'Shanti Coleman
Taryn Griffey	5	Lauren Evans
Breanna Workman	4	Destiny Graham
JaLea Bennett	4	Dejza James
LaBrittney Jones	2	
Michal Miller	1	
Farrin Bell	1	

DOUBLE-DIGIT REBOUNDING

Player	Games
Dejza James	2
Lauren Evans	1

DOUBLE-DOUBLES

Player	No. (Career)
--------	--------------

20-POINT GAMES

Player	Games (Career)
Malena Washington	1(1)
Taryn Griffey	1(1)



Niya BUTTS

HEAD COACH

Eighth YEAR | TENNESSEE, '00

Entering her eighth season at the helm of the Wildcat program, women's basketball head coach Niya Butts is more energized and driven than ever to continue to build on the strong tradition of Arizona women's basketball and to take the program to new heights. With another strong recruiting class and an experienced and motivated group of veterans, the 2015-16 season is poised to be a successful stop on the road to greatness. One of the most sought after young coaches in the country, Arizona named Butts its new women's basketball head coach on April 3, 2008, ushering in a new era of Wildcat women's basketball. She is the eighth head coach in the program's history and the first African American female head coach at the University of Arizona.

In five seasons, Butts has achieved a number of milestones early on in her head coaching career. During the 2011-12 season, Arizona's 11-1 start was the best in program history since the 1999-2000 season. Butts earned her 70th-career win with UA's 100-68 victory versus Oregon on January 13, 2013.

Senior guard Davellyn Whyte finished her career at Arizona in 2013 as one of the best players in Wildcat women's basketball history. She was the 16th pick in the WNBA draft to the San Antonio Silver Stars, earned her fourth-straight All-Pac-12 accolade and was named an Associated Press Honorable Mention All-American in 2012.

Arizona's win was the first over Utah since 1985 and broke a six-game losing streak. The Wildcats followed it up with a 61-52 win at home for the first two-game winning streak against the Utes in history. On January 13, UA defeated Oregon, 100-68, scoring 100 points as a team for just the third time since 2009.

During the 2010-11 slate, the Wildcats made their first postseason appearance since the 2004-05 season and their first appearance in the Women's NIT since the 2000-01 season. Arizona won eight of its last 11 contests. Also in 2010-11, the Wildcats got a win against the Arizona State Sun Devils for the first time since Jan. 26, 2005. The Wildcats' 10-8 conference record in 2010-11 is their best since the 2004-05 campaign and their 21 wins overall is the most since the 2003-04 season. The 2010-11 season marks the highest finish in the Pac-10 for Arizona (fourth), since tying for the Pac-10 regular-season crown in 2004.

Senior forward Ify Ibekwe and then-sophomore Whyte both earned 2011 All-Pac-10 accolades. Ibekwe was named the 2011 Pac-10 Defensive Player of the Year and earned a spot on the Pac-10 All-Defensive Team. Barnes was named honorable mention All-Pac-10 Freshman Team. In the awards given out by the Pac-10 media, Ibekwe was named All-Pac-10 and a member of the All-Pac-10 Defensive Team. Senior forward Soana Lucet was also named to the 2011 Pac-10 All-Tournament Team by members of the media. Ibekwe capped the season off with her honorable mention Associated Press All-America honor.

Overall, the Wildcats improved from 12 wins in 2008-09, to 14 wins in 2009-10, to 21 wins in 2010-11. In Pac-10 play, Arizona improved from four wins in 2008-09, to six wins in 2009-10, to 10 wins in 2010-11.

During the 2009-10 campaign, the Wildcats posted their highest win total in five seasons while also achieving the most Pac-10 wins for the program in that same span. In their historic win over Oregon on Jan. 16, Arizona scored a school-record 119 points while then-freshman Whyte scored a single-game record 39 points. The Cats won the Iona College Tip-Off Tournament to start the season and wrapped up by advancing to the Pac-10 Tournament Quarterfinals for the second-straight season.

Whyte and then-junior Ibekwe were named first-team All-Pac-10 while Whyte was chosen as the Pac-10 Freshman of the Year and Ibekwe was named to the all-defensive team. Whyte was the top vote-getter on the five-player Pac-10 All-Freshman Team. Ibekwe repeated both her All-Pac-10 and All-Defensive Team awards after earning the same honors during her sophomore season. In 2008-09, Butts led the Wildcats to a Bank of Hawaii Classic Tournament Championship in the first weekend of her career, including wins over Hawai'i and Loyola Marymount, and then mentored the Wildcats to the second round of the Pac-10 Tournament, propelled by a win over Washington State. The conference portion of the slate included wins over Oregon and USC and a sweep of Washington.

Then a sophomore, Ibekwe was named to the Associated Press All-America honorable mention team. Ibekwe, a first-team All-Pac-10 selection and first-team All-Pac-10 Defensive Team

honoree, led Arizona in scoring, rebounding, steals, blocked shots, free throws, field goals and double-doubles during the 2008-09 slate. She finished the season with 336 rebounds, coming up three shy of the program's single-season record set in the 2003-04 season. Her 16 double-doubles were also second all-time for a single-season behind the 21 posted in the 2002-03 campaign. Ibekwe led the Pac-10 and finished sixth in the NCAA in rebounds per game at 11.6. She was also third in the Pac-10 in scoring at 15.7 points per game, while also finishing second in blocked shots (1.8) and 4th in steals (2.1).

Butts came to Tucson from the University of Kentucky where she spent five seasons as an assistant coach. In her final season in Lexington, she served as Kentucky's associate head coach, and was the program's recruiting coordinator for three seasons. While at UK, Butts secured two top-10 recruiting classes, solidifying her status as one of the best young coaching talents in the nation. Butts is no stranger to rebuilding programs. During her tenure at Kentucky, Butts helped coach the Wildcats to an 88-72 record (.550) over five seasons, with a trip to the NCAA Tournament in 2005-06 and three WNIT appearances. In her final season, Butts helped lead Kentucky to a 17-16 overall record, an 8-6 mark in the SEC for a fourth-place finish, and a WNIT quarterfinal appearance.

Before her stint at Kentucky, Butts spent the 2002-03 season as an assistant coach at Michigan State. Butts helped coach MSU to a 17-12 overall record that season and an appearance in the NCAA Tournament, the Spartans' first since 1997. Prior to Michigan State, Butts spent two seasons as an assistant coach at Tennessee Tech in Cookeville, Tenn., leading the Golden Eaglettes to two Ohio Valley Conference regular-season championships in both 2001 and 2002.

Butts played collegiately at the University of Tennessee for Pat Summitt, where she was a four-year letter winner and a member of two NCAA Championship teams (1997, 1998). The Lady Vols won three SEC titles (1998, 1999, 2000) during her tenure, and she was voted the SEC's Defensive Player of the Year in 1997. She also won the Lady Vols' Unsung Hero Award that season. Butts was a three-time Academic All-SEC selection (1998, 1999, 2000) and earned Tennessee's Academic Achiever of the Week four times. She played in 111 career games at UT and graduated in 2000 with a bachelor's degree in social work and a minor in psychology. She received a master's degree in education from Tennessee Tech in 2002.

Butts, 35, is a native of Americus, Ga. She is a proud member of Delta Sigma Theta Sorority, Incorporated.

THE NIYA BUTTS FILE

Hometown: Americus, Ga.
Named UA Head Coach: April 3, 2008

EDUCATION

- Tennessee, B.A. in social work and a minor in psychology
- Tennessee Tech, M.A. in education, 2002

COACHING EXPERIENCE

- 2008-Present Arizona, Head Coach
- 2007-2008 Kentucky, Associate Head Coach
- 2003-2007 Kentucky, Assistant Coach
- 2002-2003 Michigan State, Assistant Coach
- 2000-2002 Tennessee Tech, Assistant Coach

HEAD COACH POSTSEASON EXPERIENCE

- 2010-11 NCAA Tournament First Round

WNBA PLAYERS COACHED

- 2010-13 Davellyn Whyte (16th overall pick)

BUTTS YEAR-BY-YEAR (Head Coach)

Year	Record	Notable
<i>Arizona</i>		
2008-09	12-19 (4-14 Pac-10)	
2009-10	14-17 (6-12 Pac-10)	
2010-11	21-12 (10-8 Pac-10)	WNIT 1st Round
2011-12	15-17 (3-15 Pac-12)	
2012-13	12-18 (4-14 Pac-12)	
2013-14	5-25 (1-18 Pac-12)	
2014-15	10-20 (3-15 Pac-12)	
TOTAL	89-128 (31-95)	

PLAYING CAREER

1997-00 Tennessee

- 1997 SEC Defensive Player of the Year
- 3-time Academic All-SEC selection ('98, '99, '00)
- 2-time NCAA National Champion ('97, '98)



Breanna WORKMAN

Forward • 6-1 • Junior • 2L • Las Vegas, Nev. (Centennial HS)

#0

TOP PERFORMANCES

POINTS

Season: 15, at North Texas (11/27/15)
Career: 17, vs. Stanford (02/08/15)r

REBOUNDS

Season: 7, 2x, last at San Diego (11/21/15)
Career: 11, vs. Texas Tech (12/15/13)

ASSISTS

Season: 4, vs. Louisiana Tech (12/10/15)
Career: 4, 2x, last vs. Louisiana Tech (12/10/15)

STEALS

Season: 4, vs. New Mexico State (12/02/15)
Career: 4, vs. New Mexico State (12/02/15)

BLOCKS

Season: 1, at San Diego (11/21/15)
Career: 1, 5x, last at San Diego (11/21/15)

FIELD GOALS MADE

Season: 5, vs. New Mexico State (12/02/15)
Career: 8, vs. Stanford (02/08/15)

3-PT FIELD GOALS MADE

Season:
Career:

FREE THROWS MADE

Season: 7, at North Texas (11/27/15)
Career: 7, 2x, last at North Texas (11/27/15)

MINUTES PLAYED

Season: 35, at North Texas (11/27/15)
Career: 35, 2x, last at North Texas (11/27/15)

Workman's 2015-16 Game-by-Game Statistics

				Total		3-Pointers		Free throws		Rebounds													
Opponent	Date	gs	min	fg-fga	pct	3fg-fga	pct	ft-fia	pct	off	def	tot	avg	pf	a	t/o	blk	stl	pts	avg			
at Toledo	11/14/15	*	28	4-7	.571	0-1	.000	2-5	.400	2	5	7	7.0	2	1	4	0	0	10	10.0			
HOWW	11/18/15	*	22	0-1	.000	0-0	.000	0-0	.000	1	4	5	6.0	2	3	4	0	2	0	5.0			
at San Diego	11/21/15	*	30	3-6	.500	0-1	.000	4-6	.667	1	6	7	6.3	3	2	4	1	1	10	6.7			
UNIVERSITY OF KANSAS	11/23/15	*	25	1-2	.500	0-0	.000	0-0	.000	1	5	6	6.3	3	1	3	0	1	2	5.5			
at North Texas	11/27/15	*	35	4-10	.400	0-1	.000	7-10	.700	2	2	4	5.8	3	1	3	0	0	15	7.4			
NEW MEXICO STATE	12/2/15	*	28	5-8	.625	0-0	.000	1-3	.333	2	3	5	5.7	4	0	4	0	4	11	8.0			
PACIFIC	12/05/15	*	26	4-8	.500	0-0	.000	0-0	.000	0	5	5	5.6	3	3	4	0	3	8	8.0			
LOUISIANA TECH	12/10/15	*	25	3-7	.429	0-0	.000	1-2	.500	3	0	3	5.3	3	4	3	0	1	7	7.9			
vs SMU	DEC. 19	*	14	1-1	1.000	0-0	.000	2-2	1.000	0	2	2	4.9	4	0	2	0	0	4	7.4			
vs Florida Gulf Coast Eagle	DEC. 20	*	27	1-3	.333	0-0	.000	4-6	.667	1	5	6	5.0	2	1	5	0	0	6	7.3			
Totals		10	260	26-53	.491	0-3	.000	21-34	.618	13	37	50	5.0	29	16	36	1	12	73	7.3			

Games played: 10
Minutes/game: 26.0
Points/game: 7.3
FG Pct: 49.1
3FG Pct: 0.0
FT Pct: 61.8

Rebounds/game: 5.0
Assists/game: 1.6
Turnovers/game: 3.6
Assist/turnover ratio: 0.4
Steals/game: 1.2
Blocks/game: 0.1

Workman's Career Statistics

Workman's Career Statistics																				
Season	gp-gs	min/avg	Total		3-Point		F-Throws		Rebounds				Scoring							
			fg-fga	pct	fg-fga	pct	ft-fa	pct	off	def	tot	avg	pf	fo	ast	to	blk	stl	pts	avg
2013-14	30-28	698/23.3	75-169	.444	0-0	.000	50-77	.649	43	78	121	4.0	77	0	25	46	1	22	200	6.7
2014-15	28-13	534/19.1	44-103	.427	0-0	.000	35-51	.686	35	68	103	3.7	64	0	12	35	4	15	123	4.4
2015-16	10-10	260/26.0	26-53	.491	0-3	.000	21-34	.618	13	37	50	5.0	29	0	16	36	1	12	73	7.3
TOTAL	68-51	1492/21.9	145-325	.446	0-3	.000	106-162	.654	91	183	274	4.0	170	0	53	117	6	49	396	5.8



Taryn GRIFFEY

Guard • 5-7 • Redshirt Freshman • HS • Seattle, Wash. (Dr. Phillips HS)

#3

TOP PERFORMANCES

POINTS

Season: 29, vs. Gardner-Webb (12/21/15)
Career: 29, vs. Gardner-Webb (12/21/15)

REBOUNDS

Season: 6, vs. SMU (12/19/15)
Career: 6, vs. SMU (12/19/15)

ASSISTS

Season: 4, 2x last vs. Howard (11/18/15)
Career: 4, 2x last vs. Howard (11/18/15)

STEALS

Season: 3, vs. George Mason (12/29/15)
Career: 3, vs. George Mason (12/29/15)

BLOCKS

Season: 1, 4x, last vs. SMU (12/19/15)
Career: 1, 4x, last vs. SMU (12/29/15)

FIELD GOALS MADE

Season: 11, vs. Gardner-Webb (12/21/15)
Career: 11, vs. Gardner-Webb (12/21/15)

3-PT FIELD GOALS MADE

Season: 7, vs. Gardner-Webb (12/21/15)
Career: 7, vs. Gardner-Webb (12/21/15)

FREE THROWS MADE

Season: 2, 2x, last vs. SMU (12/19/15)
Career: 2, 2x, last vs. SMU (12/19/15)

MINUTES PLAYED

Season: 28, vs. SMU (12/19/15)
Career: 28, vs. SMU (12/19/15)

Griffey's 2015-16 Game-by-Game Statistics

Opponent	Date	gs	min	Total		3-Pointers		Free throws		Rebounds				pf	a	t/o	blk	stl	pts	avg	
				fg-fga	pct	3fg-fga	pct	ft-fa	pct	off	def	tot	avg								
at Toledo	11/14/15	*	23	6-10	.600	6-9	.667	0-0	.000	0	4	4	4.0	1	4	4	0	1	18	18.0	
HOWW	11/18/15	*	20	3-5	.600	1-3	.333	0-2	.000	1	1	2	3.0	0	4	0	1	1	7	12.5	
at San Diego	11/21/15	*	23	2-8	.250	1-2	.500	0-0	.000	1	2	3	3.0	1	2	0	1	0	5	10.0	
UNIVERSITY OF KANSAS	11/23/15	*	23	6-9	.667	3-5	.600	2-4	.500	0	2	2	2.8	3	2	2	0	1	17	11.8	
at North Texas	11/27/15	*	18	1-4	.250	0-2	.000	1-2	.500	0	1	1	2.4	1	0	3	1	0	3	10.0	
NEW MEXICO STATE	12/2/15	*	22	5-7	.714	3-5	.600	1-2	.500	1	1	2	2.3	2	2	1	0	1	14	10.7	
PACIFIC	12/05/15	*	20	1-5	.200	0-2	.000	0-0	.000	0	2	2	2.3	1	2	1	0	1	2	9.4	
vs SMU	DEC. 19	*	28	6-11	.545	2-5	.400	2-3	.667	2	4	6	2.8	2	1	4	1	2	16	10.3	
vs Florida Gulf Coast Eagle	DEC. 20	*	12	0-1	.000	0-1	.000	0-0	.000	0	1	1	2.6	2	1	1	0	0	0	9.1	
vs GARDNE~1	DEC. 21	*	26	11-20	.550	7-11	.636	0-0	.000	1	3	4	2.7	2	1	1	0	0	29	11.1	
GEORGE MASON	12/29/15	*	24	3-9	.333	2-6	.333	1-2	.500	2	3	5	2.9	1	1	4	0	3	9	10.9	
Totals			11	239	44-89	.494	25-51	.490	7-15	.467	8	24	32	2.9	16	20	21	4	10	120	10.9

Games played: 11
Minutes/game: 21.7
Points/game: 10.9
FG Pct: 49.4
3FG Pct: 49.0
FT Pct: 46.7

Rebounds/game: 2.9
Assists/game: 1.8
Turnovers/game: 1.9
Assist/turnover ratio: 1.0
Steals/game: 0.9
Blocks/game: 0.4

Griffey's Career Statistics

Season	gp-gs	min/avg	Total		3-Point		F-Throws		Rebounds				pf	fo	ast	to	blk	stl	Scoring	
			fg-fga	pct	fg-fga	pct	ft-fa	pct	off	def	tot	avg							pts	avg
2015-16	11-11	239/21.7	44-89	.494	25-51	.490	7-15	.467	8	24	32	2.9	16	0	20	21	4	10	120	10.9
TOTAL	11-11	239/21.7	44-89	.494	25-51	.490	7-15	.467	8	24	32	2.9	16	0	20	21	4	10	120	10.9



Lauren EVANS

Guard • 5-11 • Junior • TR • Phoenix, Ariz. (Hamilton HS/ Virginia Tech)

#10

TOP PERFORMANCES

POINTS

Season: 10, vs. George Mason (12/29/15)
Career: 10, vs. George Mason (12/29/15)

REBOUNDS

Season: 10, at Toledo (11/14/15)
Career: 10, at Toledo (11/14/15)

ASSISTS

Season: 3, 2x, last vs. Florida Gulf Coast (12/20/15)
Career: 3, 2x, last vs. Florida Gulf Coast (12/20/15)

STEALS

Season: 4, at North Texas (11/27/15)
Career: 4, at North Texas (11/27/15)

BLOCKS

Season: 3, vs. George Mason (12/29/15)
Career: 3, vs. George Mason (12/29/15)

FIELD GOALS MADE

Season: 5, vs. George Mason (12/29/15)
Career: 5, vs. George Mason (12/29/15)

3-PT FIELD GOALS MADE

Season:
Career:

FREE THROWS MADE

Season: 2, 2x, last vs. SMU (12/19/15)
Career: 2, 2x, last vs. SMU (12/19/15)

MINUTES PLAYED

Season: 27, vs. George Mason (12/29/15)
Career: 27, vs. George Mason (12/29/15)

Evans' 2015-16 Game-by-Game Statistics

Opponent	Date	gs	min	Total		3-Pointers		Free throws		Rebounds				pf	a	t/o	blk	stl	pts	avg
				fg-fga	pct	3fg-fga	pct	ft-fa	pct	off	def	tot	avg							
at Toledo	11/14/15	26	4-7	.571	0-0	.000	0-0	.000	6-4	10	10.0	3	1	1	1	3	8	8.0		
HOWW	11/18/15	19	0-2	.000	0-0	.000	0-0	.000	1-2	3	6.5	4	0	1	1	1	0	4.0		
at San Diego	11/21/15	22	3-7	.429	0-0	.000	0-0	.000	1-0	1	4.7	3	0	1	0	0	6	4.7		
UNIVERSITY OF KANSAS	11/23/15	11	0-2	.000	0-0	.000	1-2	.500	0-1	1	3.8	4	0	0	0	1	1	3.8		
at North Texas	11/27/15	20	2-3	.667	0-0	.000	1-1	1.000	1-5	6	4.2	1	1	0	0	4	5	4.0		
NEW MEXICO STATE	12/2/15	25	2-3	.667	0-0	.000	2-2	1.000	1-0	1	3.7	1	1	1	0	2	6	4.3		
PACIFIC	12/05/15	23	2-4	.500	0-0	.000	0-2	.000	2-4	6	4.0	2	3	0	0	1	4	4.3		
LOUISIANA TECH	12/10/15	21	3-4	.750	0-0	.000	0-0	.000	1-2	3	3.9	2	2	1	0	2	6	4.5		
vs SMU	DEC. 19	20	0-2	.000	0-0	.000	2-2	1.000	1-4	5	4.0	1	1	0	1	0	2	4.2		
vs Florida Gulf Coast Eagle	DEC. 20	22	0-1	.000	0-0	.000	0-0	.000	1-4	5	4.1	3	3	1	0	0	0	3.8		
vs GARDNE-1	DEC. 21	17	1-3	.333	0-0	.000	1-2	.500	0-1	1	3.8	2	1	0	0	2	3	3.7		
GEORGE MASON	12/29/15	27	5-7	.714	0-1	.000	0-0	.000	3-3	6	4.0	1	2	1	3	1	10	4.3		
Totals		0	253	22-45	.489	0-1	.000	7-11	.636	18	30	48	4.0	27	15	7	6	17	51	4.3

Games played: 12
Minutes/game: 21.1
Points/game: 4.3
FG Pct: 48.9
3FG Pct: 0.0
FT Pct: 63.6

Rebounds/game: 4.0
Assists/game: 1.3
Turnovers/game: 0.6
Assist/turnover ratio: 2.1
Steals/game: 1.4
Blocks/game: 0.5

Evans' Career Statistics

			Total		3-Point		F-Throws		Rebounds											Scoring	
Season	gp-gs	min/avg	fg-fga	pct	fg-fga	pct	ft-fa	pct	off	def	tot	avg	pf	fo	ast	to	blk	stl	pts	avg	
2015-16	12-0	253/21.1	22-45	.489	0-1	.000	7-11	.636	18	30	48	4.0	27	0	15	7	6	17	51	4.3	
TOTAL	12-0	253/21.1	22-45	.489	0-1	.000	7-11	.636	18	30	48	4.0	27	0	15	7	6	17	51	4.3	



Malena WASHINGTON

Guard • 5-6 • Junior • 1L • Beaumont, Texas (Central HS/ Tyler JC)

#14

TOP PERFORMANCES

POINTS

Season: 21, vs. Pacific (12/05/15)
Career: 21, vs. Pacific (12/05/15)

REBOUNDS

Season: 4, vs. George Mason (12/29/15)
Career: 7, at Wake Forest (12/07/14)

ASSISTS

Season: 5, vs. Gardner-Webb (12/21/15)
Career: 5, vs. Gardner-Webb (12/21/15)

STEALS

Season: 2, 3x, last at North Texas (11/27/15)
Career: 2, 7x, last at North Texas (11/27/15)

BLOCKS

Season:
Career: 1, vs. Oregon (01/25/15)

FIELD GOALS MADE

Season: 6, 3x, last vs. Pacific (12/05/15)
Career: 6, 5x, last vs. Pacific (12/05/15)

3-PT FIELD GOALS MADE

Season: 5, vs. Pacific (12/05/15)
Career: 5, vs. Pacific (12/05/15)

FREE THROWS MADE

Season: 5, vs. Florida Gulf Coast (12/20/15)
Career: 6, at Utah (01/30/15)

MINUTES PLAYED

Season: 27, 3x, last vs. FGCU (12/20/15)
Career: 37, vs. Oregon (01/25/15)

Washington's 2014-15 Game-by-Game Statistics

				Total		3-Pointers		Free throws		Rebounds											
Opponent	Date	gs	min	fg-fga	pct	3fg-fga	pct	ft-fia	pct	off	def	tot	avg	pf	a	t/o	blk	stl	pts	avg	
at Toledo	11/14/15		27	4-13	.308	2-5	.400	0-0	.000	0	1	1	1.0	2	4	1	0	2	10	10.0	
HOWW	11/18/15		26	2-8	.250	1-3	.333	2-2	1.000	0	3	3	2.0	2	4	2	0	2	7	8.5	
at San Diego	11/21/15		9	4-10	.400	2-4	.500	0-0	.000	1	0	1	1.7	4	4	6	0	0	10	9.0	
UNIVERSITY OF KANSAS	11/23/15		22	6-12	.500	1-2	.500	3-3	1.000	0	2	2	1.8	2	0	3	0	1	16	10.8	
at North Texas	11/27/15		19	4-7	.571	0-1	.000	1-2	.500	0	1	1	1.6	3	0	5	0	2	9	10.4	
NEW MEXICO STATE	12/2/15		27	6-14	.429	1-6	.167	4-5	.800	1	2	3	1.8	2	3	4	0	1	17	11.5	
PACIFIC	12/05/15		26	6-10	.600	5-8	.625	4-4	1.000	0	1	1	1.7	1	3	3	0	0	21	12.9	
LOUISIANA TECH	12/10/15		23	4-13	.308	1-6	.167	2-2	1.000	1	1	2	1.8	3	4	2	0	1	11	12.6	
vs SMU	DEC. 19		23	1-7	.143	1-2	.500	0-2	.000	0	0	0	1.6	2	3	0	0	1	3	11.6	
vs Florida Gulf Coast Eagle	DEC. 20		27	3-8	.375	0-3	.000	5-5	1.000	0	2	2	1.6	1	4	1	0	1	11	11.5	
vs GARDNE~1	DEC. 21		22	4-7	.571	1-4	.250	0-0	.000	1	1	2	1.6	2	5	4	0	1	9	11.3	
GEORGE MASON	12/29/15		24	4-10	.400	3-6	.500	1-2	.500	1	3	4	1.8	3	1	2	0	0	12	11.3	
Totals		0	275	48-119	.403	18-50	.360	22-27	.815	5	17	22	1.8	27	35	33	0	12	136	11.3	

Games played: 12
Minutes/game: 22.9
Points/game: 11.3
FG Pct: 40.3
3FG Pct: 36.0
FT Pct: 81.5

Rebounds/game: 1.8
Assists/game: 2.9
Turnovers/game: 2.8
Assist/turnover ratio: 1.1
Steals/game: 1.0

Washington's Career Statistics

			Total		3-Point		F-Throws		Rebounds											Scoring	
Season	gp-gs	min/avg	fg-fga	pct	fg-fga	pct	ft-fga	pct	off	def	tot	avg	pf	fo	ast	to	blk	stl	pts	avg	
2014-15	30-25	724/24.1	75-220	.341	9-45	.200	47-60	.783	17	45	62	2.1	55	1	64	82	1	16	206	6.9	
2015-16	12-0	275/22.9	48-119	.403	18-50	.360	22-27	.815	5	17	22	1.8	27	0	35	33	0	12	136	11.3	
TOTAL	42-25	999/23.8	123-339	.363	27-95	.284	69-87	.793	22	62	84	2.0	82	1	99	115	1	28	342	8.1	



Keyahndra CANNON

Guard • 5-9 • Senior • 3L • San Diego, Calif. (Mission Bay HS)

#15

TOP PERFORMANCES

POINTS

Season: 10, vs. Florida Gulf Coast (12/20/15)
Career: 14, 2x, last at Utah (01/30/15)

REBOUNDS

Season: 5, vs. SMU (12/19/15)
Career: 6, at Utah (01/30/15)

ASSISTS

Season: 3, 4x, last vs. George Mason (12/29/15)
Career: 6, at Oregon (03/02/14)

STEALS

Season: 3, 4x, last vs. George Mason (12/29/15)
Career: 5, 8x, last vs. George Mason (12/29/15)

BLOCKS

Season: 1, 2x, last vs. SMU (12/19/15)
Career: 1, 15x, last vs. SMU (12/19/15)

FIELD GOALS MADE

Season: 5, vs. Florida Gulf Coast (12/20/15)
Career: 5, 8x, last vs. FGCU (12/20/15)

3-PT FIELD GOALS MADE

Season: 1, vs. Howard (11/18/15)
Career: 4 vs. Arkansas-Pine Bluff (12/29/13)

FREE THROWS MADE

Season: 4, vs. Pacific (12/05/15)
Career: 4, 2x, last vs. Pacific (12/05/15)

MINUTES PLAYED

Season: 35, at San Diego (11/21/15)
Career: 40, at Stanford (02/16/14)

Cannon's 2015-16 Game-by-Game Statistics

				Total		3-Pointers		Free throws		Rebounds											
Opponent	Date	gs	min	fg-fga	pct	3fg-fga	pct	ft-fa	pct	off	def	tot	avg	pf	a	t/o	blk	stl	pts	avg	
at Toledo	11/14/15	*	26	1-4	.250	0-0	.000	0-0	.000	0	1	1	1.0	0	3	3	0	1	2	2.0	
HOWW	11/18/15	*	22	2-7	.286	1-1	1.000	1-1	1.000	1	2	3	2.0	2	0	4	0	3	6	4.0	
at San Diego	11/21/15	*	35	4-6	.667	0-0	.000	0-0	.000	0	3	3	2.3	2	1	1	0	0	8	5.3	
UNIVERSITY OF KANSAS	11/23/15	*	18	2-4	.500	0-1	.000	0-0	.000	0	2	2	2.3	1	0	2	0	0	4	5.0	
at North Texas	11/27/15	*	17	0-0	.000	0-0	.000	0-0	.000	0	4	4	2.6	0	3	0	0	1	0	4.0	
NEW MEXICO STATE	12/2/15	*	12	1-3	.333	0-0	.000	0-0	.000	0	0	0	2.2	1	0	1	0	0	2	3.7	
PACIFIC	12/05/15	*	21	1-3	.333	0-0	.000	4-4	1.000	0	2	2	2.1	0	1	1	0	0	6	4.0	
LOUISIANA TECH	12/10/15	*	18	1-4	.250	0-0	.000	0-0	.000	1	2	3	2.3	1	3	1	1	0	2	3.8	
vs SMU	DEC. 19	*	23	1-4	.250	0-1	.000	0-0	.000	2	3	5	2.6	3	0	1	1	0	2	3.6	
vs Florida Gulf Coast Eagle	DEC. 20	*	26	5-10	.500	0-1	.000	0-0	.000	0	1	1	2.4	4	1	2	0	3	10	4.2	
vs GARDNE-1	DEC. 21	*	29	3-8	.375	0-1	.000	2-2	1.000	0	2	2	2.4	3	0	2	0	3	8	4.5	
GEORGE MASON	12/29/15	*	29	0-3	.000	0-1	.000	0-0	.000	1	3	4	2.5	1	3	1	0	3	0	4.2	
Totals		12	276	21-56	.375	1-6	.167	7-7	1.000	5	25	30	2.5	18	15	19	2	14	50	4.2	

Games played: 12
Minutes/game: 23.0
Points/game: 4.2
FG Pct: 37.5
3FG Pct: 16.7
FT Pct: 100.0

Rebounds/game: 2.5
Assists/game: 1.3
Turnovers/game: 1.6
Assist/turnover ratio: 0.8
Steals/game: 1.2
Blocks/game: 0.2

Cannon's Career Statistics

Season	gp-gs	min/avg	Total		3-Point		F-Throws		Rebounds				pf	fo	ast	to	blk	stl	Scoring	
			fg-fga	pct	fg-fga	pct	ft-fa	pct	off	def	tot	avg							pts	avg
2012-13	30-0	468/15.6	42-126	.333	8-28	.286	25-31	.806	24	41	65	2.2	58	2	15	39	8	11	117	3.9
2013-14	29-1	546/18.8	46-124	.371	9-21	.429	18-34	.529	19	41	60	2.1	41	0	22	45	2	16	119	4.1
2014-15	30-16	718/23.9	67-196	.342	10-43	.233	21-34	.618	20	48	68	2.3	46	0	44	49	3	21	165	5.5
2015-16	12-12	276/23.0	21-56	.375	1-6	.167	7-7	1.000	5	25	30	2.5	18	0	15	19	2	14	50	4.2
TOTAL	101-29	2008/19.9	176-502	.351	28-98	.286	71-106	.670	68	155	223	2.2	163	2	96	152	15	62	451	4.5



Farrin BELL

Guard • 6-0 • Redshirt Junior • 1L • Richardson, Texas (Richardson HS/SMU)

#20

TOP PERFORMANCES

POINTS

Season: 10, vs. La Tech (12/10/15)
Career: 10, vs. La Tech (12/10/15)

REBOUNDS

Season: 5, 2x, last vs. La. Tech (12/10/15)
Career: 5, 2x, last vs. La. Tech (12/10/15)

ASSISTS

Season: 4, 2x, last vs. Kansas (11/23/15)
Career: 4, 2x, last vs. Kansas (11/23/15)

STEALS

Season: 3, vs. Pacific (12/05/15)
Career: 3, vs. Pacific (12/05/15)

BLOCKS

Season: 1, at Toledo (11/14/15)
Career: 1, at Toledo (11/14/15)

FIELD GOALS MADE

Season: 4, vs. La Tech (12/10/15)
Career: 4, vs. La Tech (12/10/15)

3-PT FIELD GOALS MADE

Season:
Career:

FREE THROWS MADE

Season: 2, 3x, last vs. La Tech (12/10/15)
Career: 2, 3x, last vs. La Tech (12/10/15)

MINUTES PLAYED

Season: 24, vs. La Tech (12/10/15)
Career: 24, vs. La Tech (12/10/15)

Bell's 2015-16 Game-by-Game Statistics

Opponent	Date	qs	min	Total		3-Pointers		Free throws		Rebounds				pf	a	t/o	blk	stl	pts	avg
				fg-fga	pct	3fg-fga	pct	ft-fa	pct	off	def	tot	avg							
at Toledo	11/14/15	10		1-1	1.000	0-0	.000	2-4	.500	0	0	0	0.0	1	0	1	1	0	4	4.0
HOWW	11/18/15	12		1-3	.333	0-0	.000	1-2	.500	2	3	5	2.5	2	4	1	0	0	3	3.5
at San Diego	11/21/15	8		1-1	1.000	0-0	.000	0-0	.000	1	2	3	2.7	2	1	0	0	0	2	3.0
UNIVERSITY OF KANSAS	11/23/15	17		1-2	.500	0-0	.000	1-4	.250	2	1	3	2.8	1	4	1	1	0	3	3.0
at North Texas	11/27/15	18		0-1	.000	0-0	.000	0-0	.000	1	2	3	2.8	2	2	2	0	1	0	2.4
NEW MEXICO STATE	12/2/15	20		0-2	.000	0-0	.000	0-0	.000	0	3	3	2.8	0	2	3	0	0	0	2.0
PACIFIC	12/05/15	14		2-4	.500	0-0	.000	2-4	.500	0	3	3	2.9	1	1	2	0	3	6	2.6
LOUISIANA TECH	12/10/15 *	24		4-6	.667	0-0	.000	2-3	.667	0	5	5	3.1	2	1	2	0	1	10	3.5
vs SMU	DEC. 19	12		1-4	.250	0-1	.000	0-0	.000	0	1	1	2.9	1	1	0	0	1	2	3.3
vs Florida Gulf Coast Eagle	DEC. 20	8		0-0	.000	0-0	.000	0-0	.000	0	1	1	2.7	0	0	2	0	0	0	3.0
vs GARDNE~1	DEC. 21	12		0-2	.000	0-0	.000	0-0	.000	0	1	1	2.5	2	1	1	0	0	0	2.7
GEORGE MASON	12/29/15	8		0-1	.000	0-0	.000	0-0	.000	0	1	1	2.4	1	0	0	0	1	0	2.5
Totals		1	163	11-27	.407	0-1	.000	8-17	.471	6	23	29	2.4	15	17	15	2	7	30	2.5

Games played: 12

Minutes/game: 13.6

Points/game: 2.5

FG Pct: 40.7

3FG Pct: 0.0

FT Pct: 47.1

Rebounds/game: 2.4

Assists/game: 1.4

Turnovers/game: 1.3

Assist/turnover ratio: 1.1

Steals/game: 0.6

Blocks/game: 0.2

Bell's Career Statistics

			Total		3-Point		F-Throws		Rebounds											Scoring	
Season	gp-gs	min/avg	fg-fga	pct	fg-fga	pct	ft-fa	pct	off	def	tot	avg	pf	fo	ast	to	blk	stl	pts	avg	
2014-15	2-0	26/13.0	1-6	.167	0-1	.000	0-0	.000	0	0	0	0.0	3	0	2	1	0	1	2	1.0	
2015-16	12-1	163/13.6	11-27	.407	0-1	.000	8-17	.471	6	23	29	2.4	15	0	17	15	2	7	30	2.5	
TOTAL	14-1	189/13.5	12-33	.364	0-2	.000	8-17	.471	6	23	29	2.1	18	0	19	16	2	8	32	2.3	



Destiny GRAHAM

Forward • 6-3 • Freshman • HS • San Francisco, Calif. (Eastside College Prep)

#21

TOP PERFORMANCES

POINTS

Season: 14, vs. George Mason (12/29/15)

Career: 14, vs. George Mason (12/29/15)

REBOUNDS

Season: 9, at Toledo (11/14/15)

Career: 9, at Toledo (11/14/15)

ASSISTS

Season: 3, at Toledo (11/14/15)

Career: 3, at Toledo (11/14/15)

STEALS

Season: 3, at Toledo (11/14/15)

Career: 3, at Toledo (11/14/15)

BLOCKS

Season: 2, vs. Pacific (12/05/15)

Career: 2, vs. Pacific (12/05/15)

FIELD GOALS MADE

Season: 4, vs. George Mason (12/29/15)

Career: 4, vs. George Mason (12/29/15)

3-PT FIELD GOALS MADE

Season:

Career:

FREE THROWS MADE

Season: 6, vs. George Mason (12/29/15)

Career: 6, vs. George Mason (12/29/15)

MINUTES PLAYED

Season: 31, vs. George Mason (12/29/15)

Career: 31, vs. George Mason (12/29/15)

Graham's 2015-16 Game-by-Game Statistics

Opponent	Date	gs	min	Total		3-Pointers		Free throws		Rebounds				pf	a	t/o	blk	stl	pts	avg
				fg-fga	pct	3fg-fga	pct	ft-fla	pct	off	def	tot	avg							
at Toledo	11/14/15	28	1-4	.250	0-0	.000	0-2	.000	5	4	9	9.0	2	3	0	1	3	2	2.0	
HOWW	11/18/15	16	0-1	.000	0-0	.000	0-0	.000	1	0	1	5.0	4	1	0	0	0	0	1.0	
at San Diego	11/21/15	9	1-2	.500	0-0	.000	1-1	1.000	0	2	2	4.0	2	0	0	1	0	3	1.7	
UNIVERSITY OF KANSAS	11/23/15	14	0-2	.000	0-0	.000	2-2	1.000	2	2	4	4.0	2	0	0	0	0	2	1.8	
at North Texas	11/27/15	9	0-2	.000	0-0	.000	0-2	.000	0	0	0	3.2	1	0	2	0	2	0	1.4	
NEW MEXICO STATE	12/2/15	10	0-1	.000	0-0	.000	2-4	.500	1	3	4	3.3	2	2	0	0	0	2	1.5	
PACIFIC	12/05/15	13	2-3	.667	0-0	.000	1-2	.500	1	3	4	3.4	4	1	1	2	0	5	2.0	
LOUISIANA TECH	12/10/15	8	2-2	1.000	0-0	.000	0-0	.000	1	1	2	3.3	3	0	0	0	0	4	2.3	
vs SMU	DEC. 19	5	0-1	.000	0-0	.000	0-0	.000	1	0	1	3.0	3	0	1	1	0	0	2.0	
vs Florida Gulf Coast Eagle	DEC. 20	10	2-3	.667	0-0	.000	0-0	.000	1	2	3	3.0	2	1	2	1	1	4	2.2	
vs GARDNE-1	DEC. 21	20	1-3	.333	0-0	.000	0-0	.000	4	1	5	3.2	2	2	0	0	2	2	2.2	
GEORGE MASON	12/29/15 *	31	4-6	.667	0-0	.000	6-6	1.000	2	2	4	3.3	3	2	1	0	0	14	3.2	
Totals		1	173	13-30	.433	0-0	.000	12-19	.632	19	20	39	3.3	30	12	7	6	8	38	3.2

Games played: 12

Minutes/game: 14.4

Points/game: 3.2

FG Pct: 43.3

FT Pct: 63.2

Rebounds/game: 3.3

Assists/game: 1.0

Turnovers/game: 0.6

Assist/turnover ratio: 1.7

Steals/game: 0.7

Blocks/game: 0.5

Graham's Career Statistics

Season	gp-gs	min/avg	Total		3-Point		F-Throws		Rebounds				Scoring					
			fg-fga	pct	fg-fga	pct	ft-fa	pct	off	def	tot	avg	pf	fo	ast	to	blk	stl
2015-16	12-1	173/14.4	13-30	.433	0-0	.000	12-19	.632	19	20	39	3.3	30	0	12	7	6	8
TOTAL	12-1	173/14.4	13-30	.433	0-0	.000	12-19	.632	19	20	39	3.3	30	0	12	7	6	8



Michal MILLER

Guard • 5-7 • Freshman • HS • Michigan City, Ind. (Michigan City HS)

#23

TOP PERFORMANCES

POINTS

Season: 16, vs. Howard (11/18/15)
Career: 16, vs. Howard (11/18/15)

REBOUNDS

Season: 3, vs. Gardner-Webb (12/21/15)
Career: 3, vs. Gardner-Webb (12/21/15)

ASSISTS

Season: 2, vs. Gardner-Webb (12/21/15)
Career: 2, vs. Gardner-Webb (12/21/15)

STEALS

Season: 2, 2x, last vs. La Tech (12/10/15)
Career: 2, 2x, last vs. La Tech (12/10/15)

BLOCKS

Season: 1, vs. George Mason (12/29/15)
Career: 1, vs. George Mason (12/29/15)

FIELD GOALS MADE

Season: 5, vs. Howard (11/18/15)
Career: 5, vs. Howard (11/18/15)

3-PT FIELD GOALS MADE

Season: 4, vs. Howard (11/18/15)
Career: 4, vs. Howard (11/18/15)

FREE THROWS MADE

Season: 2, vs. Howard (11/18/15)
Career: 2, vs. Howard (11/18/15)

MINUTES PLAYED

Season: 14, vs. Howard (11/18/15)
Career: 14, vs. Howard (11/18/15)

Miller's 2015-16 Game-by-Game Statistics

Opponent	Date	gs	min	Total		3-Pointers		Free throws		Rebounds				pf	a	t/o	blk	stl	pts	avg
				fg-fga	pct	3fg-fga	pct	ft-fa	pct	off	def	tot	avg							
at Toledo	11/14/15	5	1-4	.250	1-2	.500	0-0	.000	1	0	1	1.0	0	0	0	0	0	0	3	3.0
HOWW	11/18/15	14	5-7	.714	4-6	.667	2-4	.500	0	2	2	1.5	2	0	3	0	2	16	9.5	
at San Diego	11/21/15	6	0-1	.000	0-1	.000	0-0	.000	0	0	0	1.0	0	0	0	0	1	0	6.3	
UNIVERSITY OF KANSAS	11/23/15	5	1-1	1.000	1-1	1.000	0-0	.000	1	0	1	1.0	1	0	0	0	0	3	5.5	
at North Texas	11/27/15	1	1-1	1.000	0-0	.000	0-0	.000	0	0	0	0.8	0	0	1	0	0	2	4.8	
NEW MEXICO STATE	12/2/15	3	0-1	.000	0-0	.000	0-0	.000	0	0	0	0.7	0	0	1	0	0	0	4.0	
PACIFIC	12/05/15	10	1-3	.333	1-3	.333	1-2	.500	1	0	1	0.7	4	1	2	0	0	4	4.0	
LOUISIANA TECH	12/10/15	13	3-7	.429	1-4	.250	0-0	.000	0	2	2	0.9	3	1	0	0	2	7	4.4	
vs SMU	DEC. 19	6	1-3	.333	1-3	.333	0-0	.000	1	1	2	1.0	0	0	0	0	0	3	4.2	
vs Florida Gulf Coast Eagle	DEC. 20	6	1-4	.250	1-2	.500	0-0	.000	1	1	2	1.1	0	1	0	0	0	3	4.1	
vs GARDNE-1	DEC. 21	12	3-4	.750	0-0	.000	1-1	1.000	0	3	3	1.3	0	2	2	0	0	7	4.4	
GEORGE MASON	12/29/15	6	0-5	.000	0-2	.000	0-0	.000	0	1	1	1.3	2	1	0	1	1	0	4.0	
Totals		0	87	17-41	.415	10-24	.417	4-7	.571	5	10	15	1.3	12	6	9	1	6	48	4.0

Games played: 12
Minutes/game: 7.3
Points/game: 4.0
FG Pct: 41.5
3FG Pct: 41.7
FT Pct: 57.1

Rebounds/game: 1.3
Assists/game: 0.5
Turnovers/game: 0.8
Assist/turnover ratio: 0.7
Steals/game: 0.5
Blocks/game: 0.1

Miller's Career Statistics

Season	gp-gs	min/avg	Total		3-Point		F-Throws		Rebounds				pf	fo	ast	to	blk	stl	Scoring	
			fg-fga	pct	fg-fga	pct	ft-fa	pct	off	def	tot	avg							pts	avg
2015-16	12-0	87/7.3	17-41	.415	10-24	.417	4-7	.571	5	10	15	1.3	12	0	6	9	1	6	48	4.0
TOTAL	12-0	87/7.3	17-41	.415	10-24	.417	4-7	.571	5	10	15	1.3	12	0	6	9	1	6	48	4.0



LaBrittney JONES

Forward • 6-1 • Junior • 2L • Cedar Hill, Texas (Cedar Hill HS)

#24

TOP PERFORMANCES

POINTS

Season: 16, vs. George Mason (12/29/15)
Career: 30, vs. Oregon (01/25/15)

REBOUNDS

Season: 7, vs. SMU (12/19/15)
Career: 15, vs. Texas Tech (12/15/13)

ASSISTS

Season: 2, vs. Gardner-Webb (12/21/15)
Career: 2, 10x, last vs. Gardner-Webb (12/21/15)

STEALS

Season: 3, vs. Gardner-Webb (12/21/15)
Career: 3, 3x, last vs. Gardner-Webb (12/21/15)

BLOCKS

Season: 3, 2x, last vs. George Mason (12/29/15)
Career: 6, at Colorado (02/01/15)

FIELD GOALS MADE

Season: 5, vs. Gardner-Webb (12/21/15)
Career: 10, vs. Oregon (01/25/15)

3-PT FIELD GOALS MADE

Season:
Career: 1, at Colorado (02/01/15)

FREE THROWS MADE

Season: 8, vs. George Mason (12/29/15)
Career: 10, vs. Oregon (01/25/15)

MINUTES PLAYED

Season: 27, vs. George Mason (12/29/15)
Career: 36, vs. Iona (11/08/13)

Missed the first eight games of the season with a foot injury...Returned in Puerto Rico and had seven points and seven rebounds in 23 minutes vs. SMU...Poured in 14 points and had three steals in win over Gardner-Webb in Puerto Rico Classic finale...Scored a season-high 16 points and grabbed five rebounds along with three blocks in home win over George Mason...

Jones' 2015-16 Game-by-Game Statistics

Opponent	Date	gs	min	Total		3-Pointers		Free throws		Rebounds				pf	a	t/o	blk	stl	pts	avg
				fg-fga	pct	3fg-fga	pct	ft-fa	pct	off	def	tot	avg							
vs SMU	DEC. 19	23		1-6	.167	0-0	.000	5-6	.833	2	5	7	7.0	3	1	5	2	0	7	7.0
vs Florida Gulf Coast Eagle	DEC. 20	15		3-7	.429	0-1	.000	1-2	.500	3	2	5	6.0	1	0	0	3	0	7	7.0
vs GARDNE~1	DEC. 21	25		5-10	.500	0-0	.000	4-6	.667	1	1	2	4.7	2	2	2	1	3	14	9.3
GEORGE MASON	12/29/15 *	27		4-8	.500	0-0	.000	8-11	.727	2	3	5	4.8	2	1	1	3	2	16	11.0
Totals		1	90	13-31	.419	0-1	.000	18-25	.720	8	11	19	4.8	8	4	8	9	5	44	11.0

Games played: 4
Minutes/game: 22.5
Points/game: 11.0
FG Pct: 41.9
3FG Pct: 0.0
FT Pct: 72.0

Rebounds/game: 4.8
Assists/game: 1.0
Turnovers/game: 2.0
Assist/turnover ratio: 0.5
Steals/game: 1.3
Blocks/game: 2.3

Jones' Career Statistics

Season	gp-gs	min/avg	Total		3-Point		F-Throws		Rebounds				pf	fo	ast	to	blk	stl	Scoring	
			fg-fga	pct	fg-fga	pct	ft-fa	pct	off	def	tot	avg							pts	avg
2013-14	30-30	748/24.9	84-182	.462	0-1	.000	55-75	.733	47	126	173	5.8	76	1	18	42	32	23	223	7.4
2014-15	30-17	704/23.5	101-236	.428	1-4	.250	68-89	.764	66	104	170	5.7	66	0	12	39	44	13	271	9.0
2015-16	4-1	90/22.5	13-31	.419	0-1	.000	18-25	.720	8	11	19	4.8	8	0	4	8	9	5	44	11.0
TOTAL	64-48	1542/24.1	198-449	.441	1-6	.167	141-189	.746	121	241	362	5.7	150	1	34	89	85	41	538	8.4



Dejza JAMES

Forward • 6-1 • Junior • 1L • Elk Grove, Calif. (Elk Grove HS)

#31

TOP PERFORMANCES

POINTS

Season: 16, vs. La Tech (12/10/15)
Career: 16, vs. La Tech (12/10/15)

REBOUNDS

Season: 13, vs. New Mexico State (12/02/15)
Career: 13, vs. New Mexico State (12/02/15)

ASSISTS

Season: 5, vs. La Tech (12/10/15)
Career: 5, vs. La Tech (12/10/15)

STEALS

Season: 1.5x, last vs. George Mason (12/29/15)
Career: 2, 3x, last vs. California (02/06/15)

BLOCKS

Season: 2, vs. New Mexico State (12/02/15)
Career: 2, vs. New Mexico State (12/02/15)

FIELD GOALS MADE

Season: 8, vs. La Tech (12/10/15)
Career: 8, vs. La Tech (12/10/15)

3-PT FIELD GOALS MADE

Season: 1, vs. Kansas (11/23/15)
Career: 1, vs. Kansas (11/23/15)

FREE THROWS MADE

Season: 3, vs. Kansas (11/23/15)
Career: 3, vs. Kansas (11/23/15)

MINUTES PLAYED

Season: 24, vs. La Tech (12/10/15)
Career: 29, vs. Michigan (11/09/13)

James' 2015-16 Game-by-Game Statistics

Opponent	Date	gs	min	Total		3-Pointers		Free throws		Rebounds				pf	a	t/o	blk	stl	pts	avg
				fg-fga	pct	3fg-fga	pct	ft-fga	pct	off	def	tot	avg							
at San Diego	11/21/15	21		4-10	.400	0-0	.000	0-2	.000	2	8	10	10.0	4	0	3	0	1	8	8.0
UNIVERSITY OF KANSAS	11/23/15	17		1-6	.167	1-1	1.000	3-6	.500	2	3	5	7.5	1	2	1	0	0	6	7.0
at North Texas	11/27/15	17		0-2	.000	0-0	.000	0-0	.000	0	1	1	5.3	3	1	3	0	1	0	4.7
NEW MEXICO STATE	12/2/15	21		3-8	.375	0-0	.000	1-3	.333	2	11	13	7.3	1	0	4	2	1	7	5.3
LOUISIANA TECH	12/10/15	24		8-12	.667	0-1	.000	0-1	.000	6	3	9	7.6	1	5	1	1	0	16	7.4
vs SMU	DEC. 19	23		2-7	.286	0-0	.000	0-0	.000	2	4	6	7.3	4	1	3	1	0	4	6.8
vs Florida Gulf Coast Eagle	DEC. 20	8		0-1	.000	0-0	.000	0-0	.000	0	2	2	6.6	1	0	2	0	1	0	5.9
vs GARDNE~1	DEC. 21	*	16	0-2	.000	0-0	.000	1-2	.500	2	3	5	6.4	3	1	3	0	0	1	5.3
GEORGE MASON	12/29/15	13		0-4	.000	0-0	.000	0-0	.000	3	4	7	6.4	0	0	3	1	1	0	4.7
Totals		1	160	18-52	.346	1-2	.500	5-14	.357	19	39	58	6.4	18	10	23	5	5	42	4.7

Games played: 9
Minutes/game: 17.8
Points/game: 4.7
FG Pct: 34.6
3FG Pct: 50.0
FT Pct: 35.7

Rebounds/game: 6.4
Assists/game: 1.1
Turnovers/game: 2.6
Assist/turnover ratio: 0.4
Steals/game: 0.6
Blocks/game: 0.6

James' Career Statistics

Season	qp-gs	min/avg	Total		3-Point		F-Throws		Rebounds				pf	fo	ast	to	blk	stl	Scoring	
			fg-fga	pct	fg-fga	pct	ft-fga	pct	off	def	tot	avg							pts	avg
2013-14	10-0	129/12.9	18-33	.545	0-0	.000	1-3	.333	8	16	24	2.4	12	0	2	6	2	2	37	3.7
2014-15	30-0	395/13.2	48-124	.387	0-0	.000	13-27	.481	37	51	88	2.9	40	0	6	13	4	8	109	3.6
2015-16	9-1	160/17.8	18-52	.346	1-2	.500	5-14	.357	19	39	58	6.4	18	0	10	23	5	5	42	4.7
TOTAL	49-1	684/14.0	84-209	.402	1-2	.500	19-44	.432	64	106	170	3.5	70	0	18	42	11	15	188	3.8



JaLea BENNETT

Guard • 6-0 • Sophomore • 1L • Grand Prairie, Texas (Mansfield Timberview)

#33

TOP PERFORMANCES

POINTS

Season: 18, vs. Howard (11/18/15)
Career: 18, vs. Howard (11/18/15)

REBOUNDS

Season: 5, vs. Kansas (11/23/15)
Career: 6, 3x, last vs. Utah (03/01/15)

ASSISTS

Season: 3, vs. George Mason (12/29/15)
Career: 4, vs. Utah (03/01/15)

STEALS

Season: 3, vs. New Mexico State (12/02/15)
Career: 3, vs. New Mexico State (12/02/15)

BLOCKS

Season: 1, 6x, last vs. Gardner-Webb (12/21/15)
Career: 3, vs. Arizona State (01/08/15)

FIELD GOALS MADE

Season: 7, vs. Howard (11/18/15)
Career: 7, 2x, last vs. Howard (11/18/15)

3-PT FIELD GOALS MADE

Season: 3, at North Texas (11/27/15)
Career: 3, at North Texas (11/27/15)

FREE THROWS MADE

Season: 3, vs. New Mexico State (12/02/15)
Career: 5, at Texas Tech (11/21/14)

MINUTES PLAYED

Season: 31, vs. La Tech (12/10/15)
Career: 32, vs. Utah (03/01/15)

Bennett's 2014-15 Game-by-Game Statistics

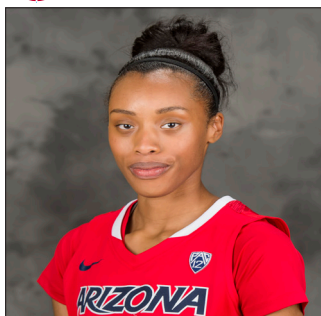
				Total		3-Pointers		Free throws		Rebounds											
Opponent	Date	qs	min	fg-fga	pct	3fg-fga	pct	ft-fa	pct	off	def	tot	avg	pf	a	t/o	blk	stl	pts	avg	
at Toledo	11/14/15	*	15	1-4	.250	0-1	.000	1-2	.500	0	1	1	1.0	3	0	0	1	1	3	3.0	
HOWW	11/18/15	*	21	7-12	.583	2-2	1.000	2-4	.500	3	1	4	2.5	3	1	1	0	1	18	10.5	
at San Diego	11/21/15	*	22	0-3	.000	0-0	.000	0-0	.000	0	0	0	1.7	2	2	0	1	0	0	7.0	
UNIVERSITY OF KANSAS	11/23/15	*	23	4-13	.308	1-2	.500	2-5	.400	2	3	5	2.5	2	0	1	0	0	11	8.0	
at North Texas	11/27/15	*	28	6-9	.667	3-3	1.000	2-3	.667	0	2	2	2.4	4	0	2	0	2	17	9.8	
NEW MEXICO STATE	12/2/15	*	20	2-5	.400	0-2	.000	3-4	.750	0	1	1	2.2	2	1	2	1	3	7	9.3	
PACIFIC	12/05/15	*	21	2-5	.400	0-0	.000	0-0	.000	0	1	1	2.0	3	1	0	0	1	4	8.6	
LOUISIANA TECH	12/10/15	*	31	6-14	.429	1-1	1.000	1-1	1.000	1	2	3	2.1	3	2	4	0	0	14	9.3	
vs SMU	DEC. 19	*	14	0-2	.000	0-1	.000	1-2	.500	0	1	1	2.0	4	0	1	1	0	1	8.3	
vs Florida Gulf Coast Eagle	DEC. 20	*	21	2-4	.500	0-0	.000	0-0	.000	2	2	4	2.2	0	1	1	1	0	4	7.9	
vs GARDNE~1	DEC. 21	*	6	1-2	.500	0-0	.000	0-0	.000	1	2	3	2.3	0	0	0	0	1	2	7.4	
GEORGE MASON	12/29/15	*	18	3-9	.333	0-2	.000	1-2	.500	0	0	0	2.1	2	3	1	0	1	7	7.3	
Totals		12	240	34-82	.415	7-14	.500	13-23	.565	9	16	25	2.1	28	11	13	6	9	88	7.3	

Games played: 12
Minutes/game: 20.0
Points/game: 7.3
FG Pct: 41.5
3FG Pct: 50.0
FT Pct: 56.5

Rebounds/game: 2.1
Assists/game: 0.9
Turnovers/game: 1.1
Assist/turnover ratio: 0.8
Steals/game: 0.8
Blocks/game: 0.5

Bennett's Career Statistics

			Total		3-Point		F-Throws		Rebounds											Scoring	
Season	gp-gs	min/avg	fg-fga	pct	fg-fga	pct	ft-fa	pct	off	def	tot	avg	pf	fo	ast	to	blk	stl	pts	avg	
2014-15	30-14	524/17.5	48-125	.384	2-15	.133	37-55	.673	37	33	70	2.3	62	1	36	43	7	15	135	4.5	
2015-16	12-12	240/20.0	34-82	.415	7-14	.500	13-23	.565	9	16	25	2.1	28	0	11	13	6	9	88	7.3	
TOTAL	42-26	764/18.2	82-207	.396	9-29	.310	50-78	.641	46	49	95	2.3	90	1	47	56	13	24	223	5.3	



A'Shanti COLEMAN

Forward • 6-2 • Freshman • HS • San Francisco, Calif. (Sacred Heart Cathedral)

#42

TOP PERFORMANCES

POINTS

Season: 10, vs. Florida Gulf Coast (12/20/15)
Career: 10, vs. Florida Gulf Coast (12/20/15)

REBOUNDS

Season: 7, vs. Pacific (12/05/15)
Career: 7, vs. Pacific (12/05/15)

ASSISTS

Season: 3, vs. George Mason (12/29/15)
Career: 3, vs. George Mason (12/29/15)

STEALS

Season: 3, vs. Howard (11/18/15)
Career: 3, vs. Howard (11/18/15)

BLOCKS

Season: 4, 2x, last vs. Pacific (12/05/15)
Career: 4, 2x, last vs. Pacific (12/05/15)

FIELD GOALS MADE

Season: 5, vs. Florida Gulf Coast (12/20/15)
Career: 5, vs. Florida Gulf Coast (12/20/15)

3-PT FIELD GOALS MADE

Season:
Career:

FREE THROWS MADE

Season: 2, vs. Howard (11/18/15)
Career: 2, vs. Howard (11/18/15)

MINUTES PLAYED

Season: 28, vs. Howard (11/18/15)
Career: 28, vs. Howard (11/18/15)

Coleman's 2015-16 Game-by-Game Statistics

Opponent	Date	gs	min	Total		3-Pointers		Free throws		Rebounds				pf	a	t/o	blk	stl	pts	avg	
				fg-fga	pct	3fg-fga	pct	ft-fga	pct	off	def	tot	avg								
at Toledo	11/14/15	*	12	1-2	.500	0-0	.000	0-0	.000	0	0	0	0.0	2	1	0	1	0	2	2.0	
HOWW	11/18/15	*	28	3-6	.500	0-0	.000	2-2	1.000	1	4	5	2.5	3	0	1	0	3	8	5.0	
at San Diego	11/21/15	*	15	1-2	.500	0-0	.000	0-0	.000	0	1	1	2.0	2	0	0	1	0	2	4.0	
UNIVERSITY OF KANSAS	11/23/15	*	22	1-2	.500	0-0	.000	0-0	.000	1	2	3	2.3	2	0	1	4	1	2	3.5	
at North Texas	11/27/15	*	18	0-1	.000	0-0	.000	0-0	.000	0	2	2	2.2	0	0	0	0	1	0	2.8	
NEW MEXICO STATE	12/2/15	*	10	1-2	.500	0-0	.000	0-2	.000	0	2	2	2.2	3	0	1	0	0	2	2.7	
PACIFIC	12/05/15	*	25	4-9	.444	0-0	.000	1-2	.500	4	3	7	2.9	1	2	0	4	0	9	3.6	
LOUISIANA TECH	12/10/15	*	13	0-0	.000	0-0	.000	0-0	.000	0	1	1	2.6	2	0	1	0	0	0	3.1	
vs SMU	DEC. 19	*	9	1-4	.250	0-0	.000	0-0	.000	1	0	1	2.4	1	1	1	0	1	2	3.0	
vs Florida Gulf Coast Eagle	DEC. 20	*	18	5-5	1.000	0-0	.000	0-0	.000	0	2	2	2.4	2	1	4	0	0	10	3.7	
vs GARDNE~1	DEC. 21	*	15	2-5	.400	0-0	.000	0-0	.000	3	1	4	2.5	2	0	2	1	1	4	3.7	
GEORGE MASON	12/29/15		18	0-6	.000	0-0	.000	0-0	.000	3	0	3	2.6	1	3	2	1	1	0	3.4	
Totals			11	203	19-44	.432	0-0	.000	3-6	.500	13	18	31	2.6	21	8	13	12	8	41	3.4

Games played: 12
Minutes/game: 16.9
Points/game: 3.4
FG Pct: 43.2
FT Pct: 50.0

Rebounds/game: 2.6
Assists/game: 0.7
Turnovers/game: 1.1
Assist/turnover ratio: 0.6
Steals/game: 0.7
Blocks/game: 1.0

Coleman's Career Statistics

			Total		3-Point		F-Throws		Rebounds											Scoring	
Season	gp-gs	min/avg	fg-fga	pct	fg-fga	pct	ft-fga	pct	off	def	tot	avg	pf	fo	ast	to	blk	stl	pts	avg	
2015-16	12-11	203/16.9	19-44	.432	0-0	.000	3-6	.500	13	18	31	2.6	21	0	8	13	12	8	41	3.4	
TOTAL	12-11	203/16.9	19-44	.432	0-0	.000	3-6	.500	13	18	31	2.6	21	0	8	13	12	8	41	3.4	

2015-16 Arizona Women's Basketball
Arizona Combined Team Statistics (as of Dec 29, 2015)
All games

RECORD:	OVERALL	HOME	AWAY	NEUTRAL
ALL GAMES	9-3	6-0	2-1	1-2
CONFERENCE	0-0	0-0	0-0	0-0
NON-CONFERENCE	9-3	6-0	2-1	1-2

#	Player	gp-gs	min	avg	Total		3-Point		F-Throw		Rebounds				pf	dq	a	to	blk	stl	pts	avg
					fg-fga	fg%	3fg-fga	3fg%	ft-fita	ft%	off	def	tot	avg								
14	WASHINGTON, Malen	12-0	275	22.9	48-119	.403	18-50	.360	22-27	.815	5	17	22	1.8	27	0	35	33	0	12	136	11.3
24	JONES, LaBrittney	4-1	90	22.5	13-31	.419	0-1	.000	18-25	.720	8	11	19	4.8	8	0	4	8	9	5	44	11.0
03	GRIFFEY, Taryn	11-11	239	21.7	44-89	.494	25-51	.490	7-15	.467	8	24	32	2.9	16	0	20	21	4	10	120	10.9
33	BENNETT, JaLea	12-12	240	20.0	34-82	.415	7-14	.500	13-23	.565	9	16	25	2.1	28	0	11	13	6	9	88	7.3
00	WORKMAN, Breanna	10-10	260	26.0	26-53	.491	0-3	.000	21-34	.618	13	37	50	5.0	29	0	16	36	1	12	73	7.3
31	JAMES, Dejza	9-1	160	17.8	18-52	.346	1-2	.500	5-14	.357	19	39	58	6.4	18	0	10	23	5	5	42	4.7
10	EVANS, Lauren	12-0	253	21.1	22-45	.489	0-1	.000	7-11	.636	18	30	48	4.0	27	0	15	7	6	17	51	4.3
15	CANNON, Keyahndra	12-12	276	23.0	21-56	.375	1-6	.167	7-7	1.000	5	25	30	2.5	18	0	15	19	2	14	50	4.2
23	MILLER, Michal	12-0	87	7.3	17-41	.415	10-24	.417	4-7	.571	5	10	15	1.3	12	0	6	9	1	6	48	4.0
42	COLEMAN, A'Shanti	12-11	203	16.9	19-44	.432	0-0	.000	3-6	.500	13	18	31	2.6	21	0	8	13	12	8	41	3.4
21	GRAHAM, Destiny	12-1	173	14.4	13-30	.433	0-0	.000	12-19	.632	19	20	39	3.3	30	0	12	7	6	8	38	3.2
20	BELL, Farrin	12-1	163	13.6	11-27	.407	0-1	.000	8-17	.471	6	23	29	2.4	15	0	17	15	2	7	30	2.5
11	HARRIS, Cherice	3-0	6	2.0	0-1	.000	0-0	.000	0-0	.000	0	0	0	0.0	0	0	1	0	0	0	0	0.0
Team											33	36	69				10					
Total.....		12	2425		286-670	.427	62-153	.405	127-205	.620	161	306	467	38.9	249	0	170	214	54	113	761	63.4
Opponents.....		12	2425		229-635	.361	48-184	.261	158-236	.669	141	262	403	33.6	210	-	110	224	41	89	664	55.3

TEAM STATISTICS	ARIZ	OPP	Date	Opponent	Score	Att.
SCORING	761	664	11/14/15	at Toledo	w 62-59	3713
Points per game	63.4	55.3	11/18/15	HOWW	w 65-28	778
Scoring margin	+8.1	-	11/21/15	at San Diego	L 54-59	714
FIELD GOALS-ATT	286-670	229-635	11/23/15	UNIVERSITY OF KANSAS	w 67-52	6652
Field goal pct	.427	.361	11/27/15	at North Texas	w 51-44	961
3 POINT FG-ATT	62-153	48-184	12/2/15	NEW MEXICO STATE	w 68-64	741
3-point FG pct	.405	.261	12/05/15	PACIFIC	w 69-56	765
3-pt FG made per game	5.2	4.0	12/10/15	LOUISIANA TECH	w 77-67	827
FREE THROWS-ATT	127-205	158-236	N Dec. 19	vs SMU	L 46-58	0
Free throw pct	.620	.669	N Dec. 20	vs Florida Gulf Coast Eagles	L 55-57	0
F-Throws made per game	10.6	13.2	N Dec. 21	vs GARDNE~1	w 79-60	0
REBOUNDS	467	403	12/29/15	GEORGE MASON	Wot 68-60	990
Rebounds per game	38.9	33.6				
Rebounding margin	+5.3	-				
ASSISTS	170	110				
Assists per game	14.2	9.2				
TURNOVERS	214	224				
Turnovers per game	17.8	18.7				
Turnover margin	+0.8	-				
Assist/turnover ratio	0.8	0.5				
STEALS	113	89				
Steals per game	9.4	7.4				
BLOCKS	54	41				
Blocks per game	4.5	3.4				
ATTENDANCE	10753	5388				
Home games-Avg/Game	6-1792	3-1796				
Neutral site-Avg/Game	-	3-0				

* - Conference game

Score by Periods	1st	2nd	3rd	4th	OT	Totals
Arizona	185	171	192	198	15	761
Opponents	188	132	155	182	7	664



2015-16 Arizona Women's Basketball
 Arizona Team Game-by-Game Comparison (as of Dec 29, 2015)
All games

Opponent	1st	2nd	Score	Mar	Total FG	FG Pct	3-Pointers	3FG Pct	Free Throws	FT Pct	Rebounds	Assist	T/Over	Block	Steal	Fouls
Toledo	29/23	33/36	62-59	+3	24-56/21-51	.429/.412	9-18/6-14	.500/.429	5-13/11-17	.385/.647	35/32 +3	17/12	16/15	5/2	11/5	16/16
HOWW	35/14	30/14	65-28	+37	23-52/6-39	.442/.154	9-15/1-7	.600/.143	10-17/15-23	.588/.652	38/30 +8	17/3	19/30	2/3	15/5	24/18
San Diego	21/25	33/34	54-59	(5)	23-56/20-53	.411/.377	3-8/2-13	.375/.154	5-9/17-22	.556/.773	37/35 +2	12/11	16/15	5/4	3/7	25/15
UNIVERSITY OF KANSAS	31/28	36/24	67-52	+15	23-56/19-59	.411/.322	7-12/4-20	.583/.200	14-26/10-13	.538/.769	45/38 +7	9/9	14/17	5/5	5/2	22/26
North Texas	24/28	27/16	51-44	+7	18-40/16-44	.450/.364	3-7/5-20	.429/.250	12-20/7-16	.600/.438	26/34 (8)	8/9	24/26	1/1	14/8	18/22
NEW MEXICO STATE	28/29	40/35	68-64	+4	25-54/23-55	.463/.418	4-13/8-21	.308/.381	14-25/10-11	.560/.909	39/29 +10	11/10	22/22	3/2	12/12	18/22
PACIFIC	30/26	39/30	69-56	+13	25-54/19-55	.463/.345	6-13/4-18	.462/.222	13-20/14-19	.650/.737	34/36 (2)	19/11	14/19	6/3	9/6	20/17
LOUISIANA TECH	39/33	38/34	77-67	+10	34-69/21-49	.493/.429	3-12/4-10	.250/.400	6-9/21-30	.667/.700	39/31 +8	22/5	16/18	2/1	7/6	23/15
SMU	24/27	22/31	46-58	(12)	15-52/20-59	.288/.339	4-13/4-16	.308/.250	12-17/14-25	.706/.560	42/44 (2)	9/13	18/13	8/6	5/7	28/18
Florida Gulf Coast Eagles	30/33	25/24	55-57	(2)	22-47/21-58	.468/.362	1-8/6-24	.125/.250	10-13/9-14	.769/.643	43/23 +20	14/13	21/9	5/4	6/12	18/13
GARDNE~1	31/24	48/36	79-60	+19	31-66/19-48	.470/.396	8-16/2-10	.500/.200	9-13/20-29	.692/.690	44/24 +20	15/3	17/20	3/6	12/11	20/11
GEORGE MASON	34/30	19/23	68-60	+8	23-68/24-65	.338/.369	5-18/2-11	.278/.182	17-23/10-17	.739/.588	45/47 (2)	17/11	17/20	9/4	14/8	17/17

Note: Game totals are displayed in the format TEAM/OPPONENT for each category



**2015-16 Arizona Women's Basketball
Arizona Team High/Low Analysis (as of Dec 29, 2015)
All games**

Arizona - TEAM GAME HIGHS

POINTS	79	vs GARDNE~1 (DEC. 21)
	77	LOUISIANA TECH (12/10/15)
	69	PACIFIC (12/05/15)
	68	GEORGE MASON (12/29/15)
	68	NEW MEXICO STATE (12/2/15)
FIELD GOALS MADE	34	LOUISIANA TECH (12/10/15)
	31	vs GARDNE~1 (DEC. 21)
FIELD GOAL ATTEMPTS	69	LOUISIANA TECH (12/10/15)
	68	GEORGE MASON (12/29/15)
FIELD GOAL PERCENTAGE	.493 (34-69)	LOUISIANA TECH (12/10/15)
	.470 (31-66)	vs GARDNE~1 (DEC. 21)
3 PT FIELD GOALS MADE	9	HOWW (11/18/15)
	9	at Toledo (11/14/15)
3 PT FG ATTEMPTS	18	GEORGE MASON (12/29/15)
	18	at Toledo (11/14/15)
3 PT FG PERCENTAGE	.600 (9-15)	HOWW (11/18/15)
	.583 (7-12)	UNIVERSITY OF KANSAS (11/23/15)
FREE THROWS MADE	17	GEORGE MASON (12/29/15)
	14	NEW MEXICO STATE (12/2/15)
	14	UNIVERSITY OF KANSAS (11/23/15)
FREE THROW ATTEMPTS	26	UNIVERSITY OF KANSAS (11/23/15)
	25	NEW MEXICO STATE (12/2/15)
FREE THROW PERCENTAGE	.769 (10-13)	vs Florida Gulf Coast Eagles (DEC. 20)
	.739 (17-23)	GEORGE MASON (12/29/15)
REBOUNDS	45	GEORGE MASON (12/29/15)
	45	UNIVERSITY OF KANSAS (11/23/15)
ASSISTS	22	LOUISIANA TECH (12/10/15)
	19	PACIFIC (12/05/15)
STEALS	15	HOWW (11/18/15)
	14	GEORGE MASON (12/29/15)
	14	at North Texas (11/27/15)
BLOCKED SHOTS	9	GEORGE MASON (12/29/15)
	8	vs SMU (DEC. 19)
TURNOVERS	24	at North Texas (11/27/15)
	22	NEW MEXICO STATE (12/2/15)
FOULS	28	vs SMU (DEC. 19)
	25	at San Diego (11/21/15)